

CATALOGUE
LOADING CRANES
2011



b.o.b. Sistemi Idraulici S.p.A.

lift your life

www.bobspa.com



b.o.b. Sistemi Idraulici S.p.A.

COMPANY WITH QUALITY MANAGEMENT
SYSTEM CERTIFIED BY DNV
= ISO 9001:2008 =

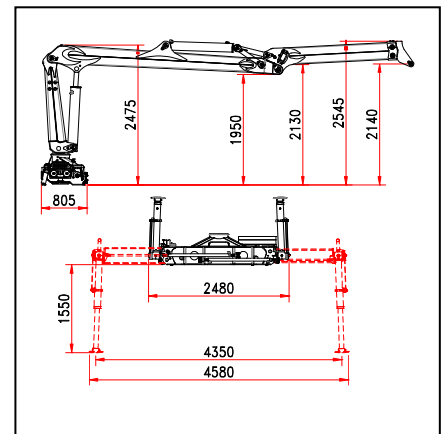
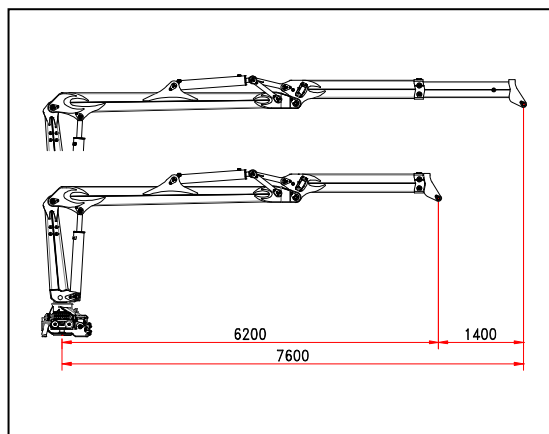
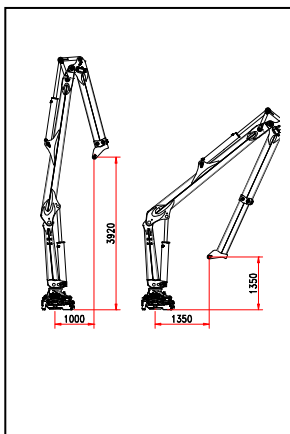
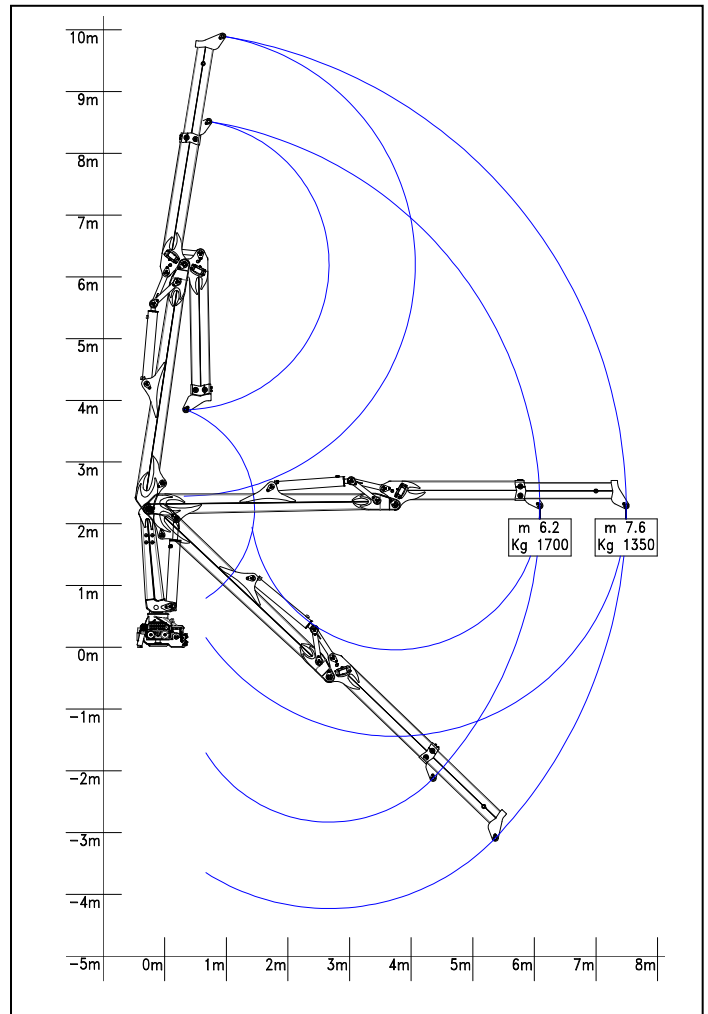
CRANE « R 110 MS1 »

NON FOLDABLE

- Class of calculation H1B4
 - Lifting moment = kNm 110
 - Hydraulic outreach = 7,60 m
 - First arm rigid type
 - Jib with one hydraulic extension with integrated fluid transmission system inside jib
 - Compensated proportional flow control
 - Top seat control with two additional functions at the jib extension
 - Stabilizers ground bilateral controls with hydraulic extension and descent
 - Crane rotation 425° with double rack
 - Construction to Machinery Directives 2006/42/CE+UNI EN 12.999
 - Basic crane weight*: 2.190 kg
- * The weight is indicative and referred to the basic crane without options or, accessories, protection carters and ancillary equipments (grab, clamp, glass handling device)

Options:

- Stabilizing feet with hydraulic rotation 180°
- Proportional electro-hydraulic flow control with SCANRECO radio control
- Lateral top seat control with joystick and pedals
- Man standing platform with crane operative restricted area
- Ground hoisting control
- Glass container handling device
- Oil cooling system
- Top seat access ladder
- Working lights (top seat and jib light)
- Hour counter
- Dry seat foldable shelter



Updating 12/2011

The technical details shown in this sheet are indicative and can be changed by the builder without prior notice.

B.O.B. Sistemi Idraulici S.p.A. – Regione Oltre Rea, 61 – 12060 Monchiero (CN) - Italia
P. I.V.A. 00496180043 - Tel.: +39 (0173) 780002/3 – Fax: +39 (0173) 780004
Internet: www.bobspa.com - E-mail: info@bobitalev.com



b.o.b. Sistemi Idraulici S.p.A.

COMPANY WITH QUALITY MANAGEMENT
SYSTEM CERTIFIED BY DNV
= ISO 9001:2008 =

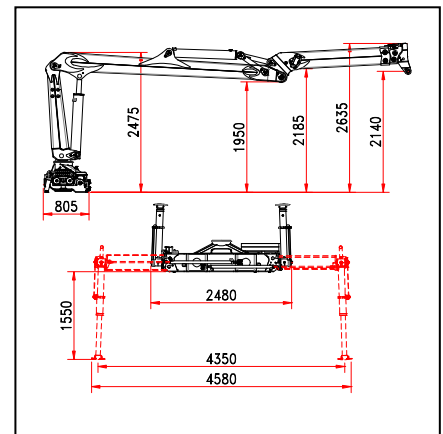
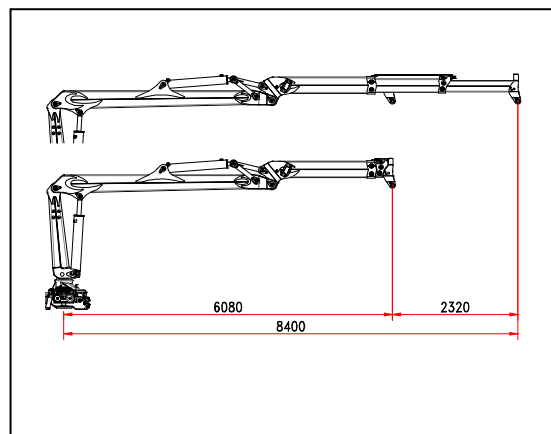
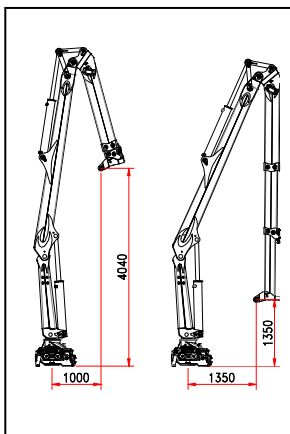
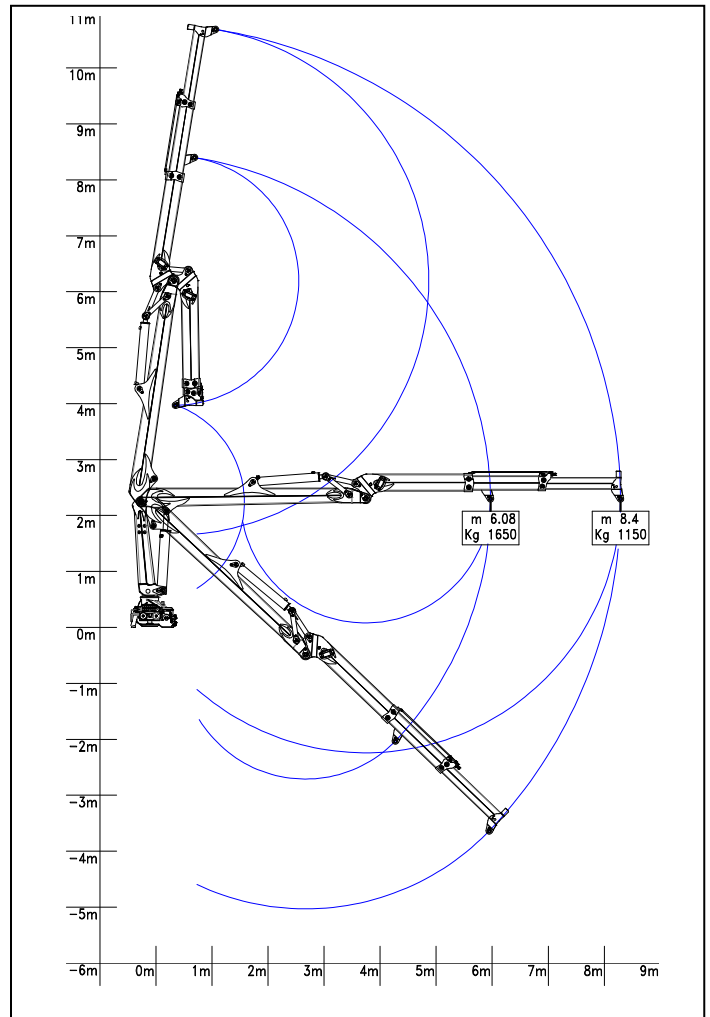
CRANE « R 110 MS2 »

NON FOLDABLE

- Class of calculation H1B4
 - Lifting moment = kNm 110
 - Hydraulic outreach = 8,40 m
 - First arm rigid type
 - Jib with two hydraulic extensions with integrated fluid transmission system inside jib
 - Compensated proportional flow control
 - Top seat control with two additional functions at the jib extension
 - Stabilizers ground bilateral controls with hydraulic extension and descent
 - Crane rotation 425° with double rack
 - Construction to Machinery Directives 2006/42/CE+UNI EN 12.999
 - Basic crane weight*: 2.300 kg
- * The weight is indicative and referred to the basic crane without options or, accessories, protection carters and ancillary equipments (grab, clamp, glass handling device)

Options:

- Stabilizing feet with hydraulic rotation 180°
- Proportional electro-hydraulic flow control with SCANRECO radio control
- Lateral top seat control with joystick and pedals
- Man standing platform with crane operative restricted area
- Ground hoisting control
- Glass container handling device
- Oil cooling system
- Top seat access ladder
- Working lights (top seat and jib light)
- Hour counter
- Dry seat foldable shelter



Updating 12/2011

The technical details shown in this sheet are indicative and can be changed by the builder without prior notice.

B.O.B. Sistemi Idraulici S.p.A. – Regione Oltre Rea, 61 – 12060 Monchiero (CN) - Italia
P. I.V.A. 00496180043 - Tel.: +39 (0173) 780002/3 – Fax: +39 (0173) 780004
Internet: www.bobspa.com - E-mail: info@bobitalev.com



b.o.b. Sistemi Idraulici S.p.A.

COMPANY WITH QUALITY MANAGEMENT
SYSTEM CERTIFIED BY DNV
= ISO 9001:2008 =

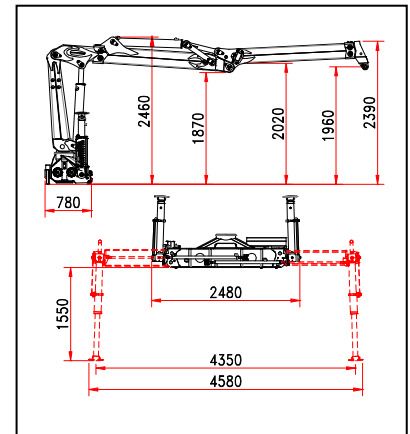
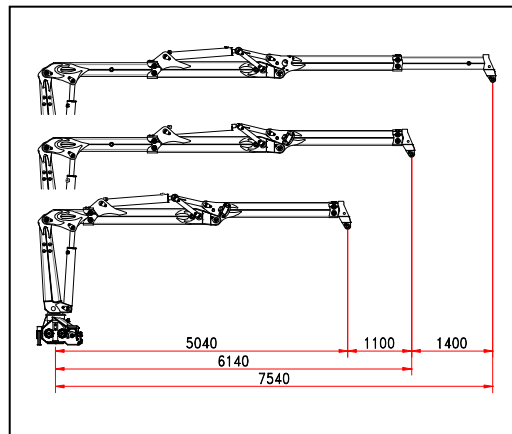
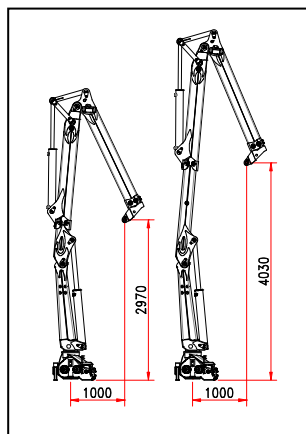
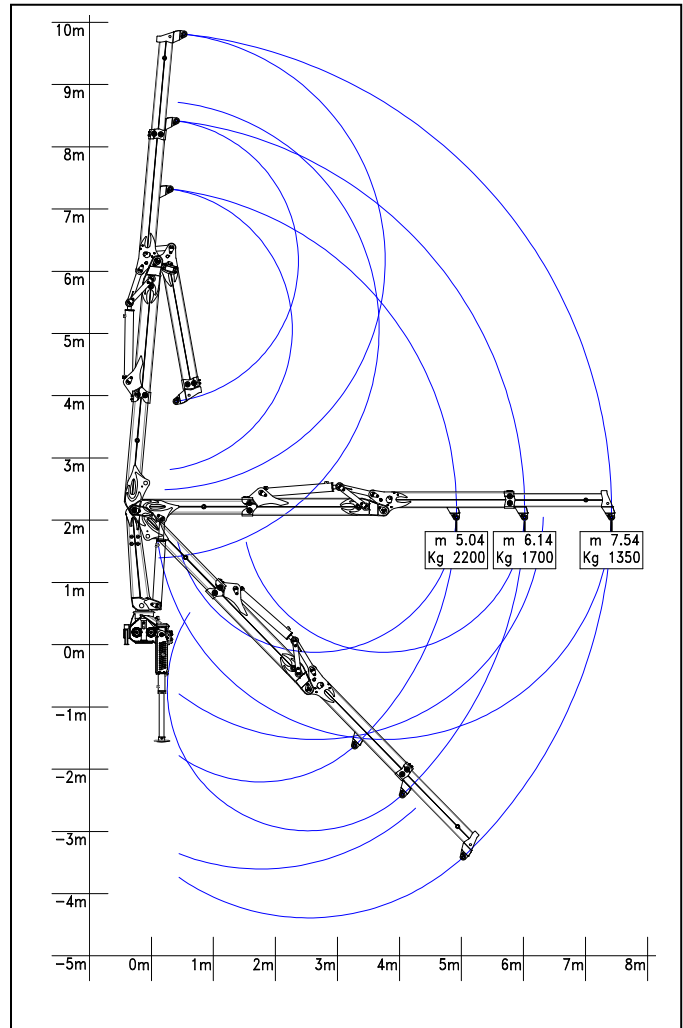
CRANE « R 110 S2S »

NON FOLDABLE

- Class of calculation H1B4
- Lifting moment = kNm 110
- Hydraulic outreach = 7,54 m
- First arm with short hydraulic extension
- Jib with one hydraulic extension with integrated fluid transmission system inside jib
- Compensated proportional flow control
- Top seat control with two additional functions at the jib extension
- Stabilizers ground bilateral controls with extension and hydraulic descent
- Crane rotation 425° with double rack
- Construction to Machinery Directives 2006/42/CE+UNI EN 12.999
- Basic crane weight*: 2.400 kg
* The weight is indicative and referred to the basic crane without options or, accessories, protection carters and ancillary equipments (grab, clamp, glass handling device)

Options:

- Stabilizing feet with hydraulic rotation 180°
- Proportional electro-hydraulic flow control with SCANRECO radio control
- Lateral top seat control with joystick and pedals
- Man standing platform with crane operative restricted area
- Ground hoisting control
- Glass container handling device
- Oil cooling system
- Top seat access ladder
- Working lights (top seat and jib light)
- Hour counter
- Dry seat foldable shelter



Updating 12/2011

The technical details shown in this sheet are indicative and can be changed by the builder without prior notice.

B.O.B. Sistemi Idraulici S.p.A. – Regione Oltre Rea, 61 – 12060 Monchiero (CN) - Italia
P. I.V.A. 00496180043 - Tel.: +39 (0173) 780002/3 – Fax: +39 (0173) 780004
Internet: www.bobspa.com - E-mail: info@bobitalev.com



b.o.b. Sistemi Idraulici S.p.A.

COMPANY WITH QUALITY MANAGEMENT
SYSTEM CERTIFIED BY DNV
= ISO 9001:2008 =

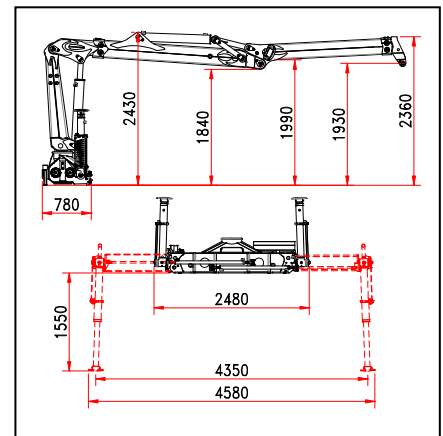
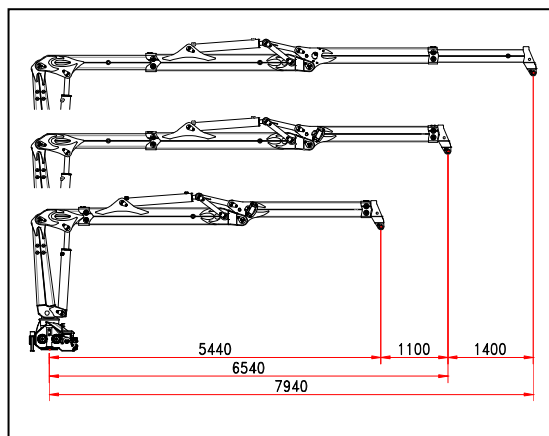
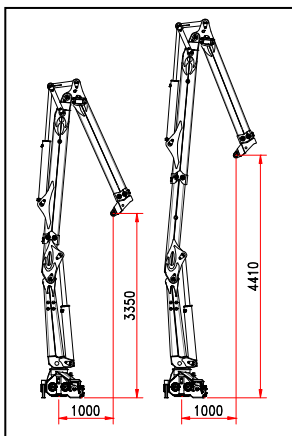
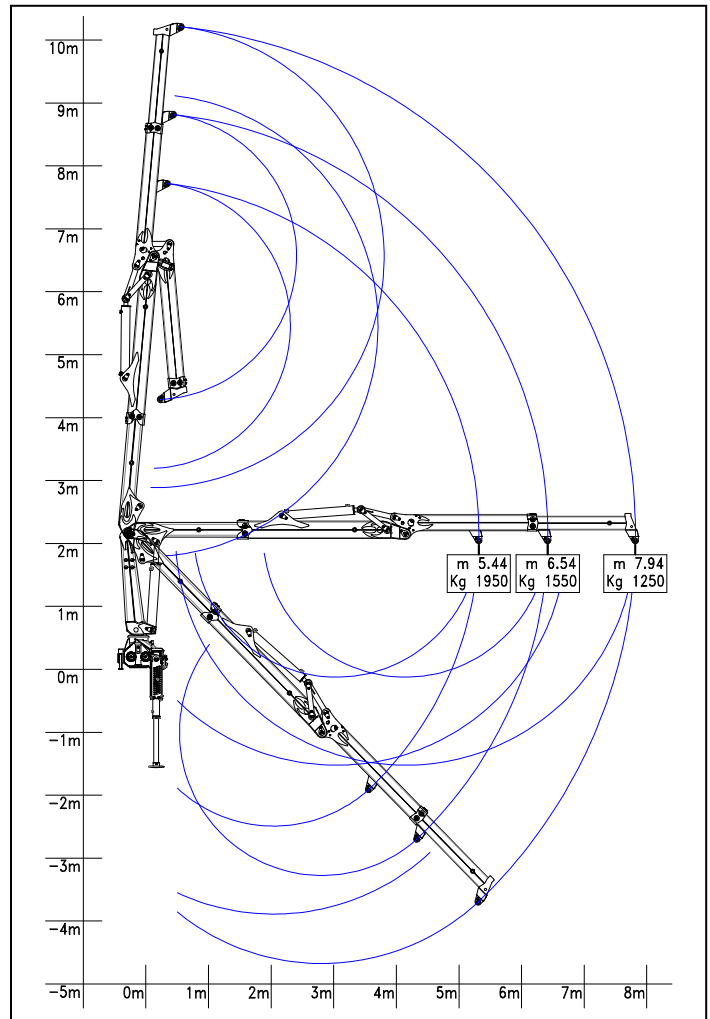
CRANE « R 110 S2L »

NON FOLDABLE

- Class of calculation H1B4
 - Lifting moment = kNm 110
 - Hydraulic outreach = 7,94 m
 - First arm with standard hydraulic extension
 - Jib with one hydraulic extension with integrated fluid transmission inside jib
 - Compensated proportional flow control
 - Top seat control with two additional functions at the jib extension
 - Stabilizers ground bilateral controls with hydraulic extension and descent
 - Crane rotation 425° with double rack
 - Construction to Machinery Directives 2006/42/CE+UNI EN 12.999
 - Basic crane weight*: 2.430 kg
- * The weight is indicative and referred to the basic crane without options or, accessories, protection carters and ancillary equipments (grab, clamp, glass handling device)

Options:

- Stabilizing feet with hydraulic rotation 180°
- Proportional electro-hydraulic flow control with SCANRECO radio control
- Lateral top seat control with joystick and pedals
- Man standing platform with crane operative restricted area
- Ground hoisting control
- Glass container handling device
- Oil cooling system
- Top seat access ladder
- Working lights (top seat and jib light)
- Hour counter
- Dry seat foldable shelter



Updating 12/2011

The technical details shown in this sheet are indicative and can be changed by the builder without prior notice.

B.O.B. Sistemi Idraulici S.p.A. – Regione Oltre Rea, 61 – 12060 Monchiero (CN) - Italia
P. I.V.A. 00496180043 - Tel.: +39 (0173) 780002/3 – Fax: +39 (0173) 780004
Internet: www.bobspa.com - E-mail: info@bobitalev.com



b.o.b. Sistemi Idraulici S.p.A.

COMPANY WITH QUALITY MANAGEMENT
SYSTEM CERTIFIED BY DNV
= ISO 9001:2008 =

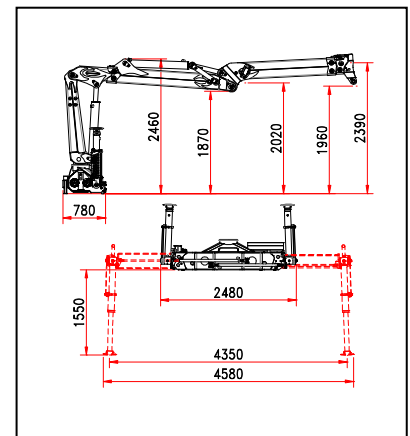
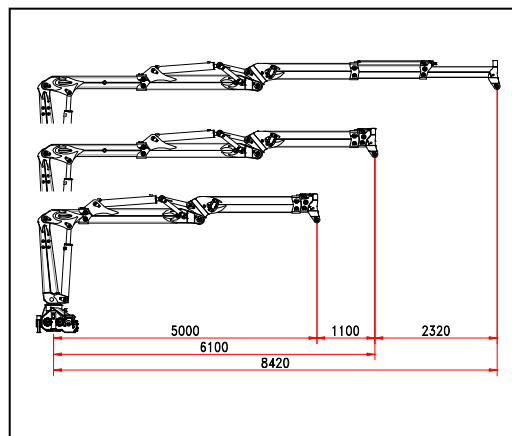
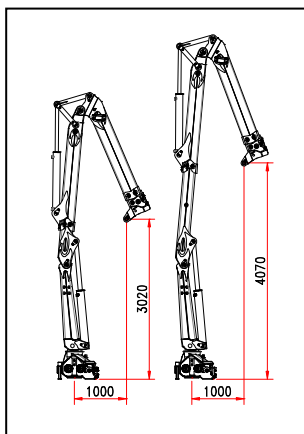
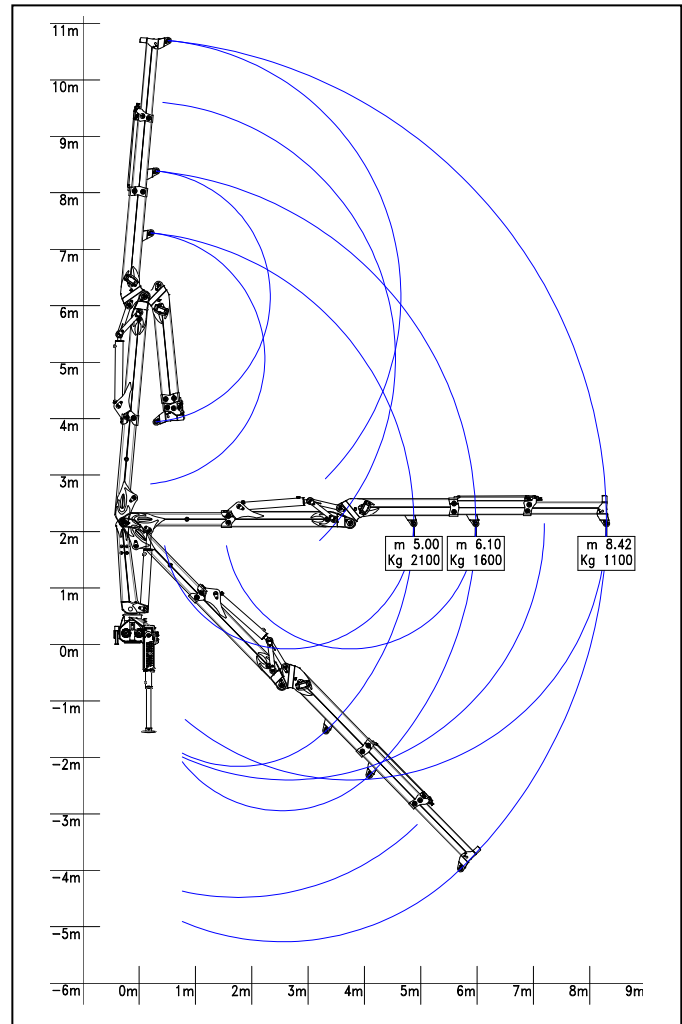
CRANE « R 110 S3S »

NON FOLDABLE

- Class of calculation H1B4
 - Lifting moment = kNm 110
 - Hydraulic outreach = 8,42 m
 - First arm with short hydraulic extension
 - Jib with two hydraulic extensions with integrated fluid transmission system inside jib
 - Compensated proportional flow control
 - Top seat control with two additional functions at the jib extension
 - Stabilizers ground bilateral controls with hydraulic extension and descent
 - Crane rotation 425° with double rack
 - Construction to Machinery Directives 2006/42/CE+UNI EN 12.999
 - Basic crane weight*: 2.470 kg
- * The weight is indicative and referred to the basic crane without options or, accessories, protection carters and ancillary equipments (grab, clamp, glass handling device)

Options:

- Stabilizing feet with hydraulic rotation 180°
- Proportional electro-hydraulic flow control with SCANRECO radio control
- Lateral top seat control with joystick and pedals
- Man standing platform with crane operative restricted area
- Ground hoisting control
- Glass container handling device
- Oil cooling system
- Top seat access ladder
- Working lights (top seat and jib light)
- Hour counter
- Dry seat foldable shelter



Updating 12/2011

The technical details shown in this sheet are indicative and can be changed by the builder without prior notice.

B.O.B. Sistemi Idraulici S.p.A. – Regione Oltre Rea, 61 – 12060 Monchiero (CN) - Italia
P. I.V.A. 00496180043 - Tel.: +39 (0173) 780002/3 – Fax: +39 (0173) 780004
Internet: www.bobspa.com - E-mail: info@bobitalev.com



b.o.b. Sistemi Idraulici S.p.A.

COMPANY WITH QUALITY MANAGEMENT
SYSTEM CERTIFIED BY DNV
= ISO 9001:2008 =

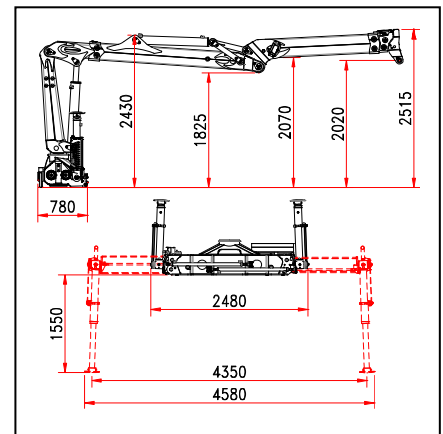
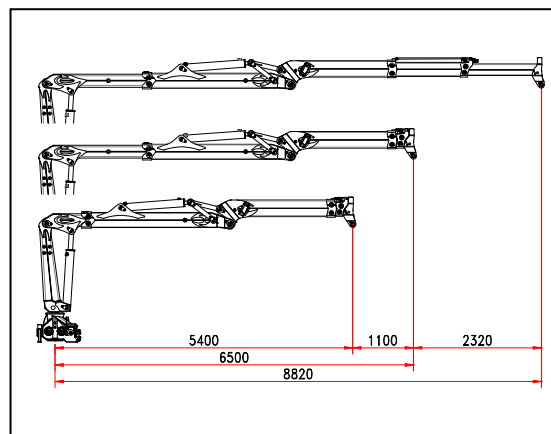
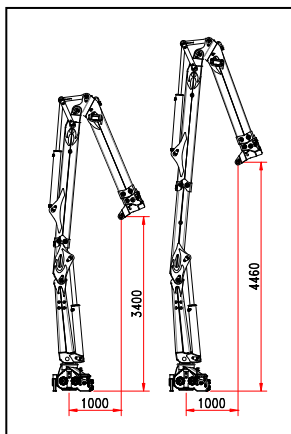
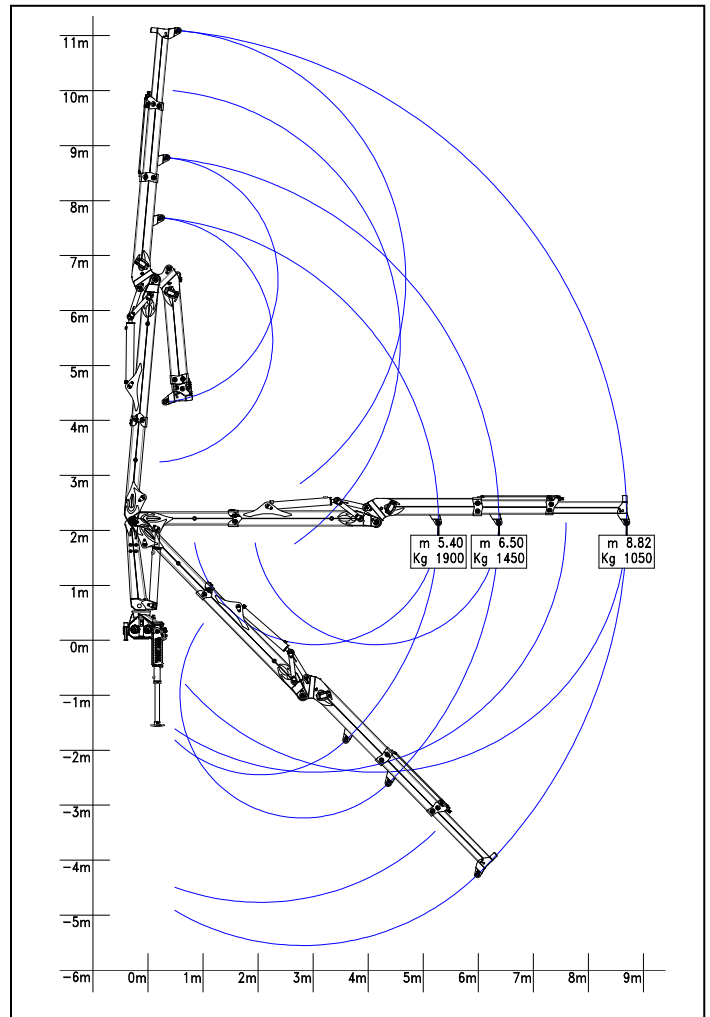
CRANE « R 110 S3L »

NON FOLDABLE

- Class of calculation H1B4
 - Lifting moment = kNm 110
 - Hydraulic outreach = 8,82 m
 - First arm with standard hydraulic extension
 - Jib with two hydraulic extensions with integrated fluid transmission system inside jib
 - Compensated proportional flow control
 - Top seat control with two additional functions at the jib extension
 - Stabilizers ground bilateral controls with hydraulic extension and descent
 - Crane rotation 425° with double rack
 - Construction to Machinery Directives 2006/42/CE+UNI EN 12.999
 - Basic crane weight*: 2.500 kg
- * The weight is indicative and referred to the basic crane without options or, accessories, protection carters and ancillary equipments (grab, clamp, glass handling device)

Options:

- Stabilizing feet with hydraulic rotation 180°
- Proportional electro-hydraulic flow control with SCANRECO radio control
- Lateral top seat control with joystick and pedals
- Man standing platform with crane operative restricted area
- Ground hoisting control
- Glass container handling device
- Oil cooling system
- Top seat access ladder
- Working lights (top seat and jib light)
- Hour counter
- Dry seat foldable shelter



Updating 12/2011

The technical details shown in this sheet are indicative and can be changed by the builder without prior notice.

B.O.B. Sistemi Idraulici S.p.A. – Regione Oltre Rea, 61 – 12060 Monchiero (CN) - Italia
P. I.V.A. 00496180043 - Tel.: +39 (0173) 780002/3 – Fax: +39 (0173) 780004
Internet: www.bobspa.com - E-mail: info@bobitalev.com



b.o.b. Sistemi Idraulici S.p.A.

COMPANY WITH QUALITY MANAGEMENT
SYSTEM CERTIFIED BY DNV
= ISO 9001:2008 =

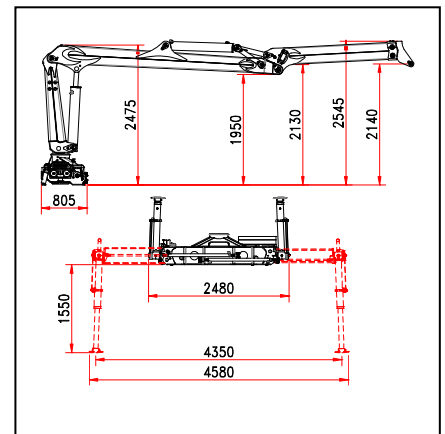
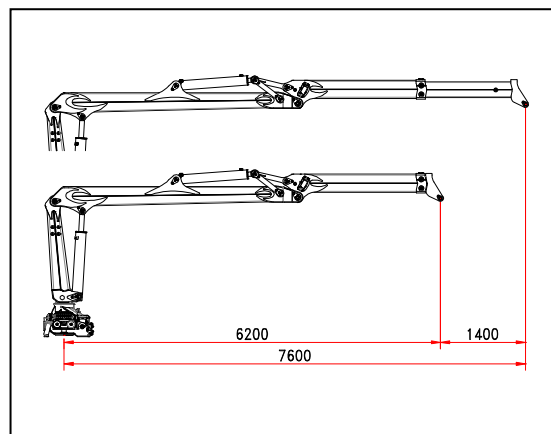
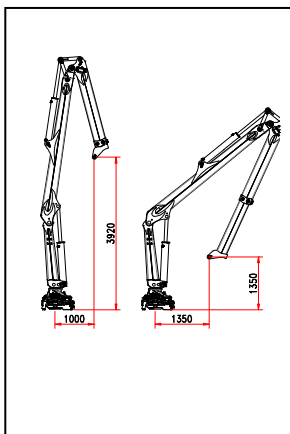
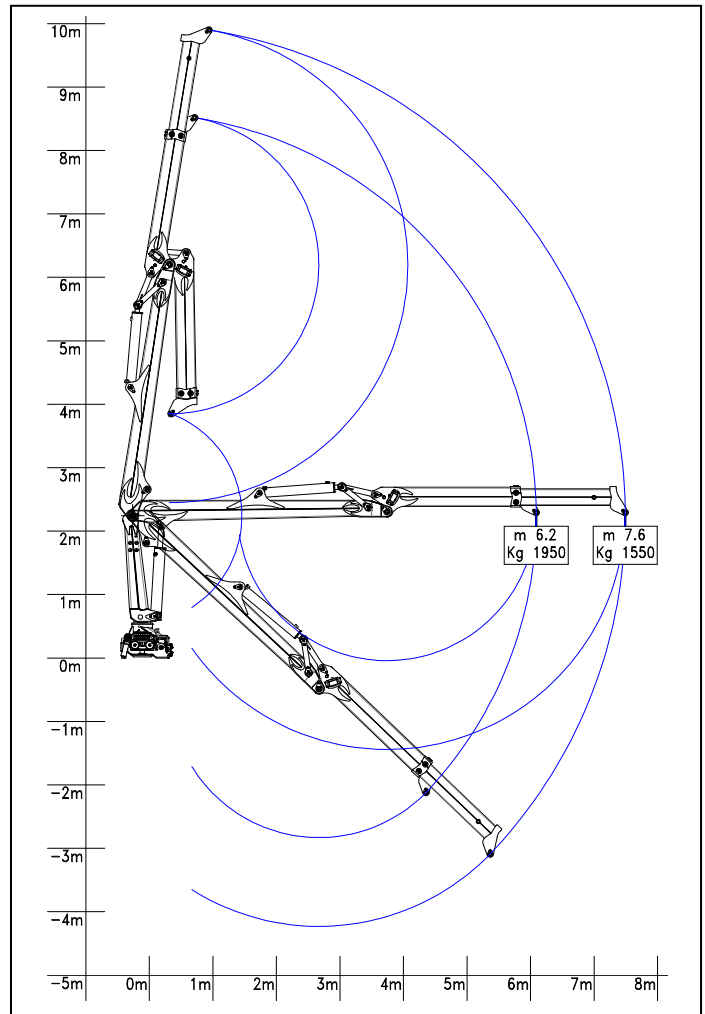
CRANE « R 130 MS1 »

NON FOLDABLE

- Class of calculation H1B4
 - Lifting moment = kNm 130
 - Hydraulic outreach = 7,60 m
 - First arm rigid type
 - Jib with one hydraulic extension with integrated fluid transmission system inside jib
 - Compensated proportional flow control
 - Top seat control with two additional functions at the jib extension
 - Stabilizers ground bilateral controls with hydraulic extension and 180° rotation
 - Crane rotation 425° with double rack
 - Construction to Machinery Directives 2006/42/CE+UNI EN 12.999
 - Basic crane weight*: 2.220 kg
- * The weight is indicative and referred to the basic crane without options or, accessories, protection carters and ancillary equipments (grab, clamp, glass handling device)

Options:

- Proportional electro-hydraulic flow control with SCANRECO radio control
- Lateral top seat control with joystick and pedals
- Man standing platform with crane operative restricted area
- Ground hoisting control
- Glass container handling device
- Oil cooling system
- Top seat access ladder
- Working lights (top seat and jib light)
- Hour counter
- Dry seat foldable shelter



Updating 12/2011

The technical details shown in this sheet are indicative and can be changed by the builder without prior notice.

B.O.B. Sistemi Idraulici S.p.A. – Regione Oltre Rea, 61 – 12060 Monchiero (CN) - Italia
P. I.V.A. 00496180043 - Tel.: +39 (0173) 780002/3 – Fax: +39 (0173) 780004
Internet: www.bobspa.com - E-mail: info@bobitalev.com



b.o.b. Sistemi Idraulici S.p.A.

COMPANY WITH QUALITY MANAGEMENT
SYSTEM CERTIFIED BY DNV
= ISO 9001:2008 =

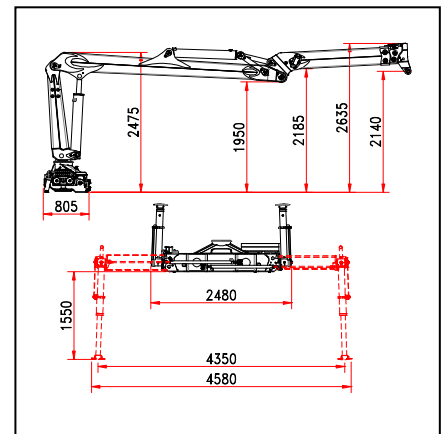
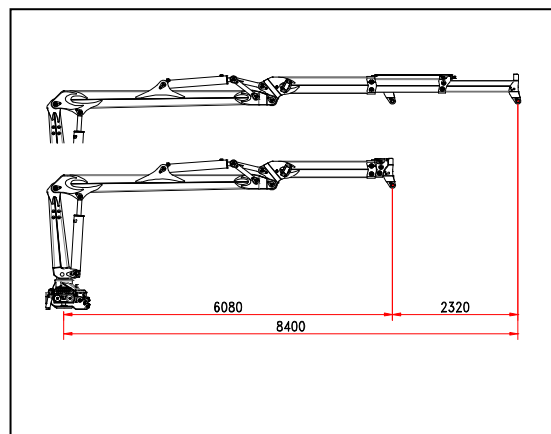
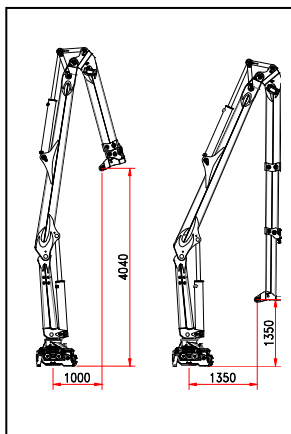
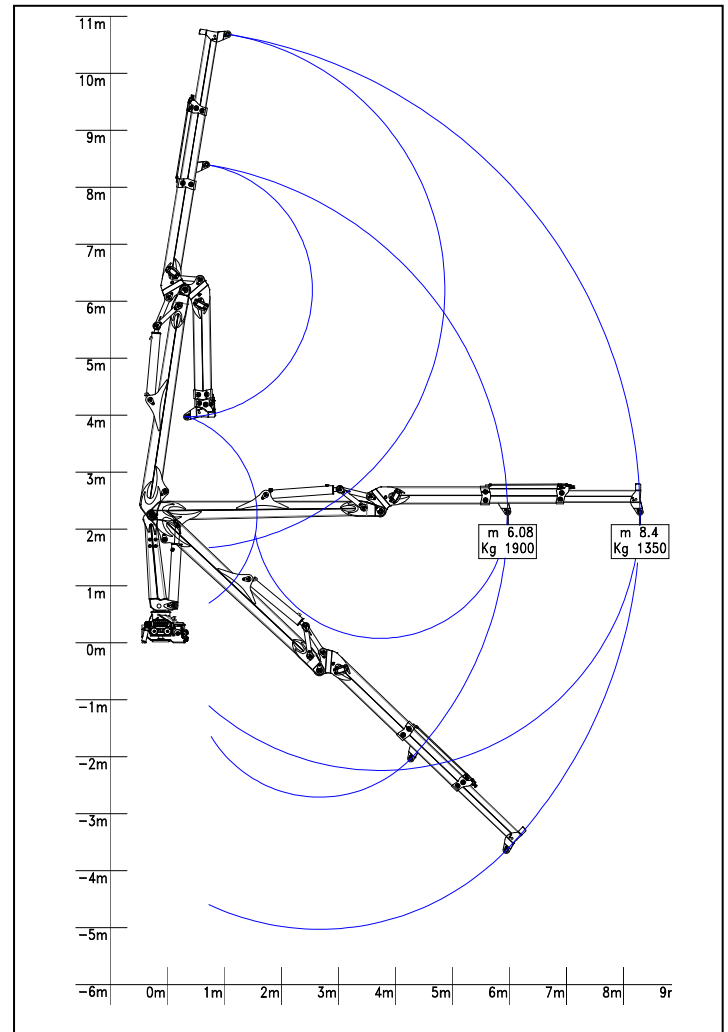
CRANE « R 130 MS2 »

NON FOLDABLE

- Class of calculation H1B4
 - Lifting moment = kNm 130
 - Hydraulic outreach = 8,40 m
 - First arm rigid type
 - Jib with two hydraulic extensions with integrated fluid transmission system inside jib
 - Compensated proportional flow control
 - Top seat control with two additional functions at the jib extension
 - Stabilizers ground bilateral controls with hydraulic extension and 180° rotation
 - Crane rotation 425° with double rack
 - Construction to Machinery Directives 2006/42/CE+UNI EN 12.999
 - Basic crane weight*: 2.330 kg
- * The weight is indicative and referred to the basic crane without options or, accessories, protection carters and ancillary equipments (grab, clamp, glass handling device)

Options:

- Proportional electro-hydraulic flow control with SCANRECO radio control
- Lateral top seat control with joystick and pedals
- Man standing platform with crane operative restricted area
- Ground hoisting control
- Glass container handling device
- Oil cooling system
- Top seat access ladder
- Working lights (top seat and jib light)
- Hour counter
- Dry seat foldable shelter



Updating 12/2011

The technical details shown in this sheet are indicative and can be changed by the builder without prior notice.

B.O.B. Sistemi Idraulici S.p.A. – Regione Oltre Rea, 61 – 12060 Monchiero (CN) - Italia
P. I.V.A. 00496180043 - Tel.: +39 (0173) 780002/3 – Fax: +39 (0173) 780004
Internet: www.bobspa.com - E-mail: info@bobitalev.com



b.o.b. Sistemi Idraulici S.p.A.

COMPANY WITH QUALITY MANAGEMENT
SYSTEM CERTIFIED BY DNV
= ISO 9001:2008 =

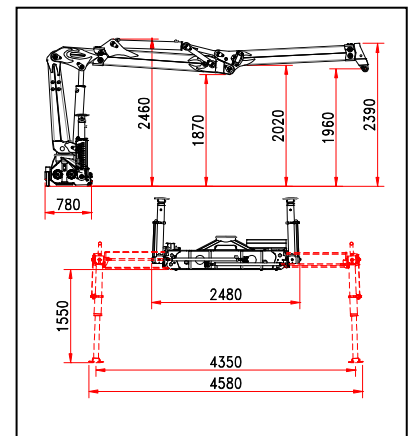
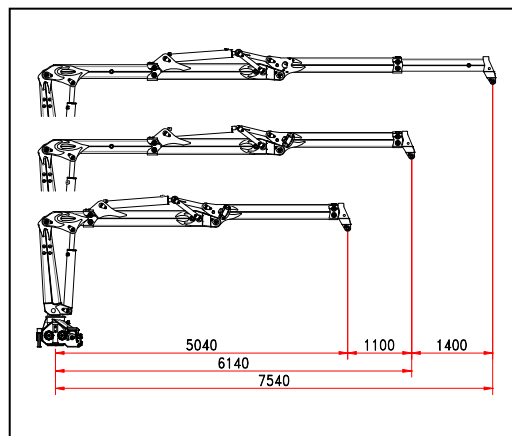
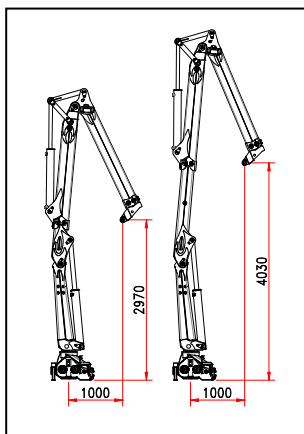
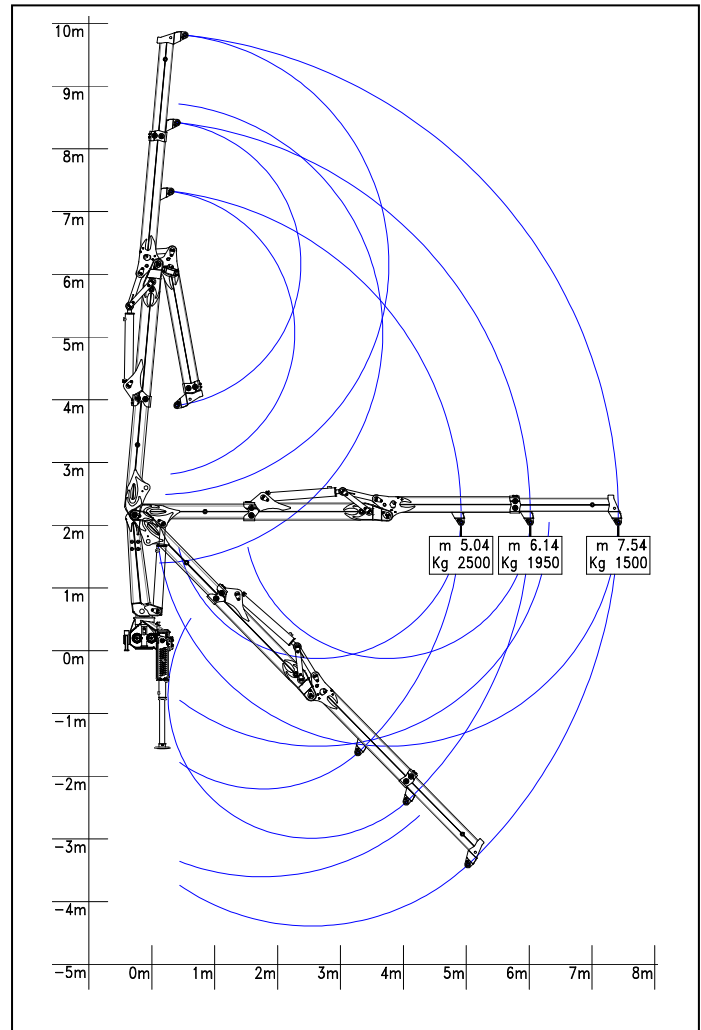
CRANE « R 130 S2S »

NON FOLDABLE

- Class of calculation H1B4
 - Lifting moment = kNm 130
 - Hydraulic outreach = 7,54 m
 - First arm with short hydraulic extension
 - Jib with one hydraulic extension with integrated fluid transmission system inside jib
 - Compensated proportional flow control
 - Top seat control with two additional functions at the jib extension
 - Stabilizers ground bilateral controls with hydraulic extension and 180° rotation
 - Crane rotation 425° with double rack
 - Construction to Machinery Directives 2006/42/CE+UNI EN 12.999
 - Basic crane weight*: 2.430 kg
- * The weight is indicative and referred to the basic crane without options or, accessories, protection carters and ancillary equipments (grab, clamp, glass handling device)

Options:

- Proportional electro-hydraulic flow control with SCANRECO radio control
- Lateral top seat control with joystick and pedals
- Man standing platform with crane operative restricted area
- Ground hoisting control
- Glass container handling device
- Oil cooling system
- Top seat access ladder
- Working lights (top seat and jib light)
- Hour counter
- Dry seat foldable shelter



Updating 12/2011

The technical details shown in this sheet are indicative and can be changed by the builder without prior notice.

B.O.B. Sistemi Idraulici S.p.A. – Regione Oltre Rea, 61 – 12060 Monchiero (CN) - Italia
P. I.V.A. 00496180043 - Tel.: +39 (0173) 780002/3 – Fax: +39 (0173) 780004
Internet: www.bobspa.com - E-mail: info@bobitalev.com



b.o.b. Sistemi Idraulici S.p.A.

COMPANY WITH QUALITY MANAGEMENT
SYSTEM CERTIFIED BY DNV
= ISO 9001:2008 =

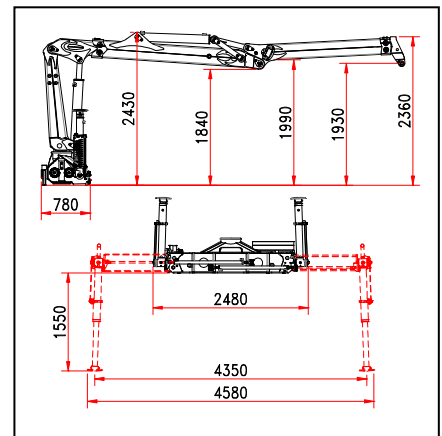
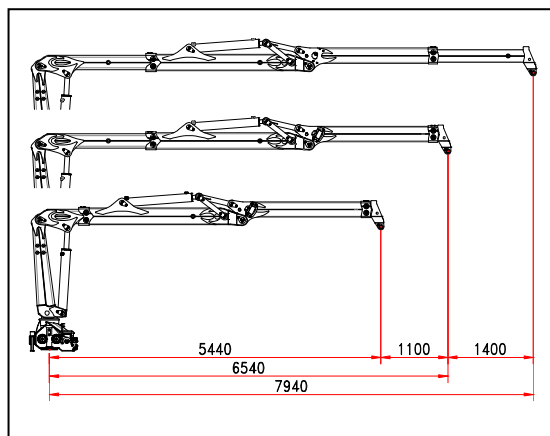
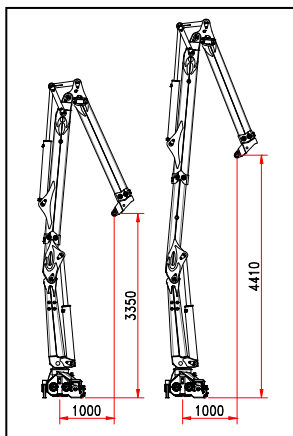
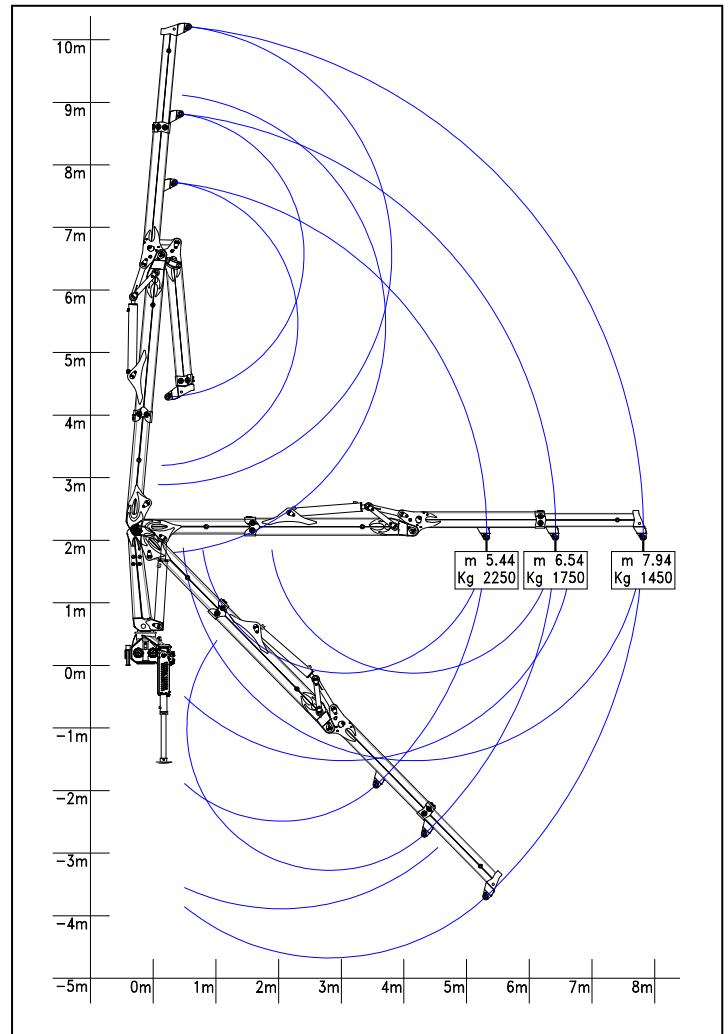
CRANE « R 130 S2L »

NON FOLDABLE

- Class of calculation H1B4
 - Lifting moment = kNm 130
 - Hydraulic outreach = 7,94 m
 - First arm with standard hydraulic extension
 - Jib with one hydraulic extension with integrated fluid transmission system inside jib
 - Compensated proportional flow control
 - Top seat control with two additional functions at the jib extension
 - Stabilizers ground bilateral controls with hydraulic extension and 180° rotation
 - Crane rotation 425° with double rack
 - Construction to Machinery Directives 2006/42/CE+UNI EN 12.999
 - Basic crane weight*: 2.460 kg
- * The weight is indicative and referred to the basic crane without options or, accessories, protection carters and ancillary equipments (grab, clamp, glass handling device)

Options:

- Proportional electro-hydraulic flow control with SCANRECO radio control
- Lateral top seat control with joystick and pedals
- Man standing platform with crane operative restricted area
- Ground hoisting control
- Glass container handling device
- Oil cooling system
- Top seat access ladder
- Working lights (top seat and jib light)
- Hour counter
- Dry seat foldable shelter



Updating 12/2011

The technical details shown in this sheet are indicative and can be changed by the builder without prior notice.

B.O.B. Sistemi Idraulici S.p.A. – Regione Oltre Rea, 61 – 12060 Monchiero (CN) - Italia
P. I.V.A. 00496180043 - Tel.: +39 (0173) 780002/3 – Fax: +39 (0173) 780004
Internet: www.bobspa.com - E-mail: info@bobitalev.com



b.o.b. Sistemi Idraulici S.p.A.

COMPANY WITH QUALITY MANAGEMENT
SYSTEM CERTIFIED BY DNV
= ISO 9001:2008 =

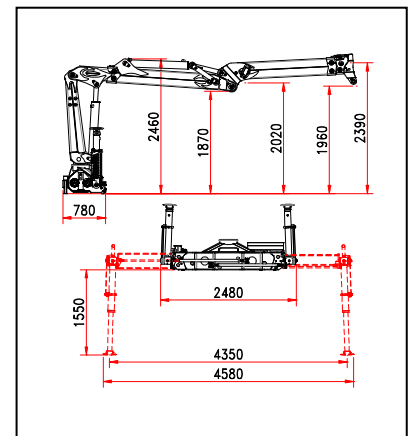
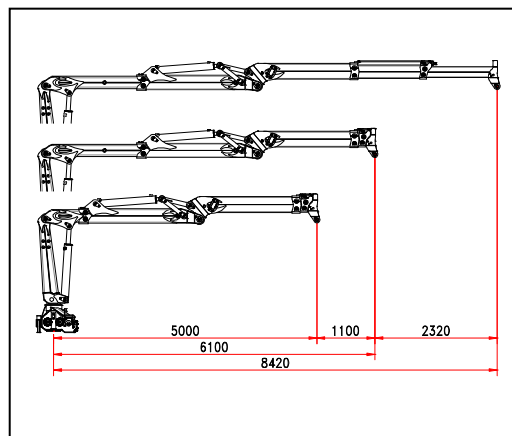
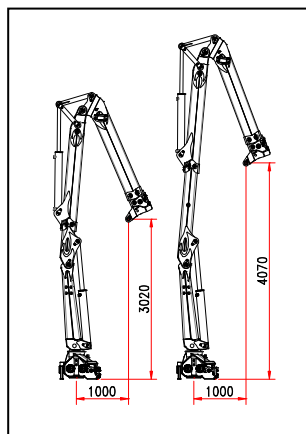
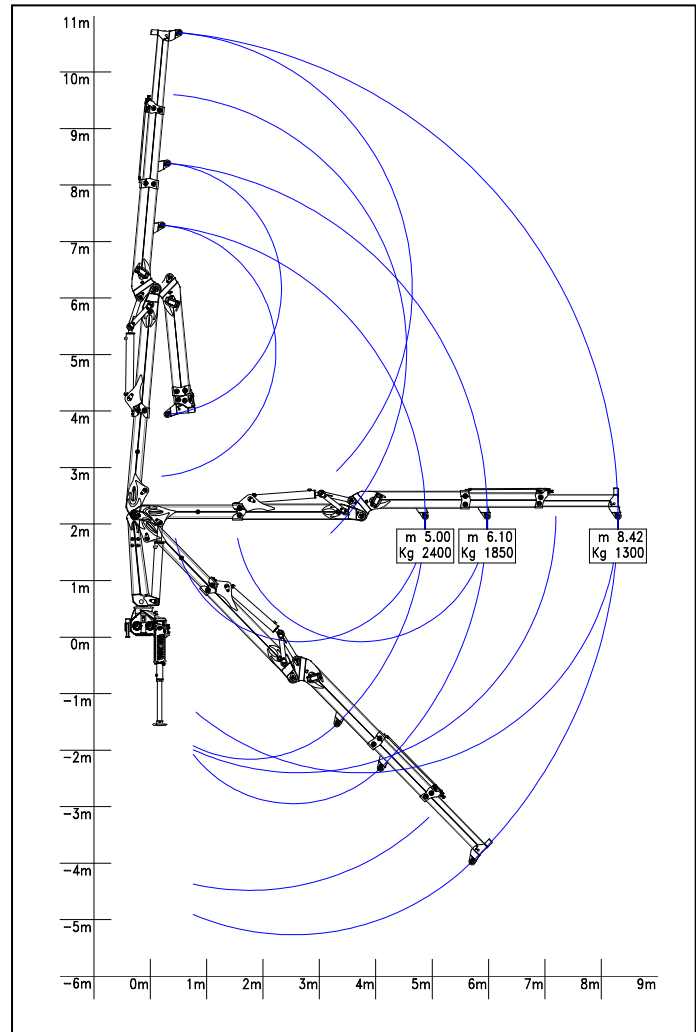
CRANE « R 130 S3S »

NON FOLDABLE

- Class of calculation H1B4
 - Lifting moment = kNm 130
 - Hydraulic outreach = 8,42 m
 - First arm with short hydraulic extension
 - Jib with two hydraulic extensions with integrated fluid transmission system inside jib
 - Compensated proportional flow control
 - Top seat control with two additional functions at the jib extension
 - Stabilizers ground bilateral controls with hydraulic extension and 180° rotation
 - Crane rotation 425° with double rack
 - Construction to Machinery Directives 2006/42/CE+UNI EN 12.999
 - Basic crane weight*: 2.500 kg
- * The weight is indicative and referred to the basic crane without options or, accessories, protection carters and ancillary equipments (grab, clamp, glass handling device)

Options:

- Proportional electro-hydraulic flow control with SCANRECO radio control
- Lateral top seat control with joystick and pedals
- Man standing platform with crane operative restricted area
- Ground hoisting control
- Glass container handling device
- Oil cooling system
- Top seat access ladder
- Working lights (top seat and jib light)
- Hour counter
- Dry seat foldable shelter



Updating 12/2011

The technical details shown in this sheet are indicative and can be changed by the builder without prior notice.

B.O.B. Sistemi Idraulici S.p.A. – Regione Oltre Rea, 61 – 12060 Monchiero (CN) - Italia
P. I.V.A. 00496180043 - Tel.: +39 (0173) 780002/3 – Fax: +39 (0173) 780004
Internet: www.bobspa.com - E-mail: info@bobitalev.com



b.o.b. Sistemi Idraulici S.p.A.

COMPANY WITH QUALITY MANAGEMENT
SYSTEM CERTIFIED BY DNV
= ISO 9001:2008 =

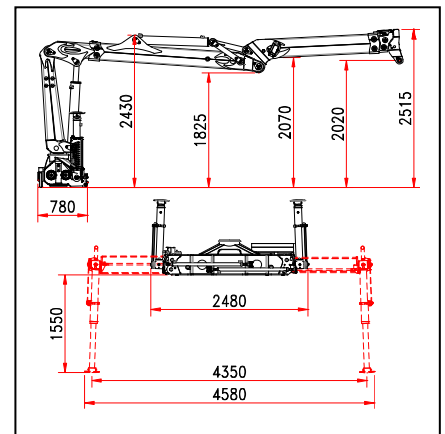
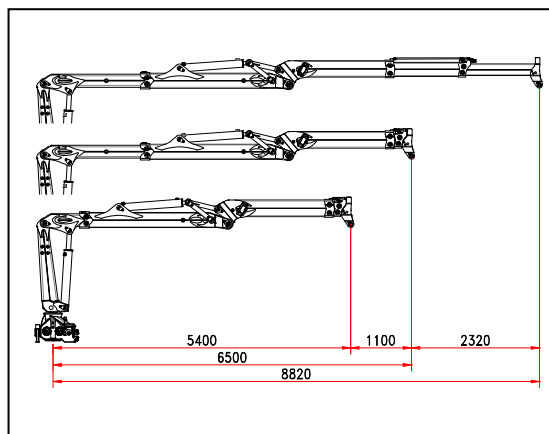
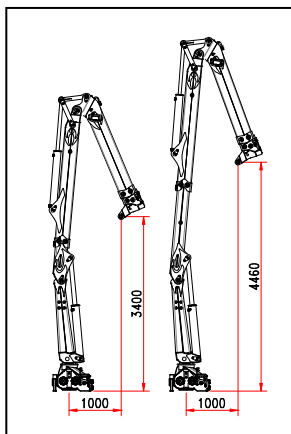
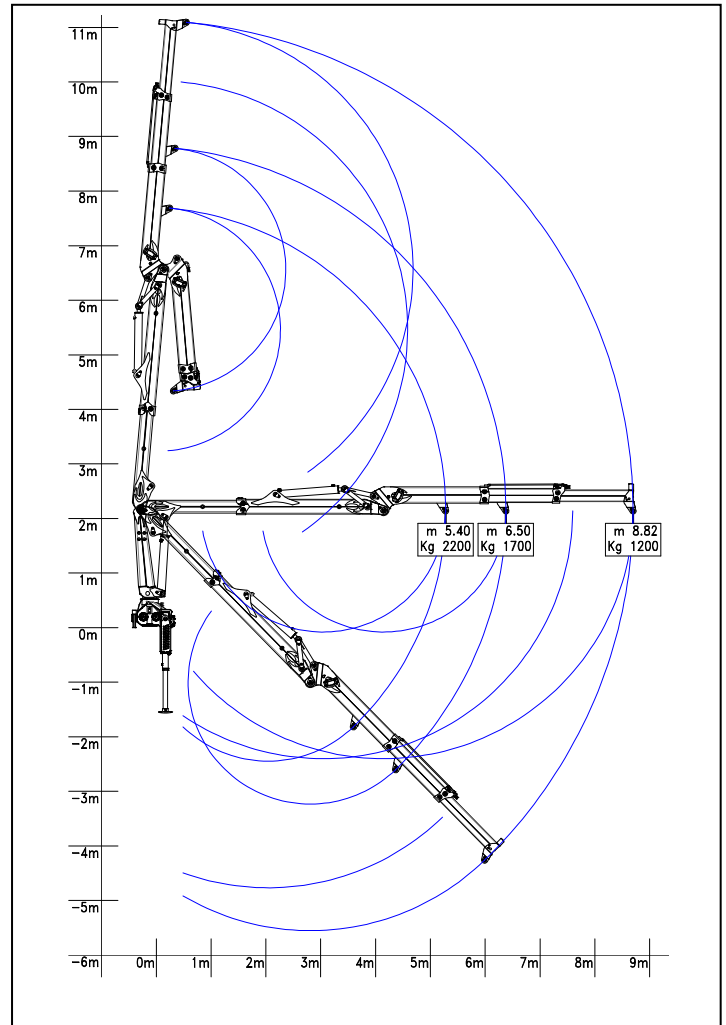
CRANE « R 130 S3L »

NON FOLDABLE

- Class of calculation H1B4
 - Lifting moment = kNm 130
 - Hydraulic outreach = 8,82 m
 - First arm with standard hydraulic extension
 - Jib with two hydraulic extension with integrated fluid transmission system inside jib
 - Compensated proportional flow control
 - Top seat control with two additional functions at the jib extension
 - Stabilizers ground bilateral controls with extension and 180° hydraulic rotation
 - Crane rotation 425° with double rack
 - Construction to Machinery Directives 2006/42/CE+UNI EN 12.999
 - Basic crane weight*: 2.530 kg
- * The weight is indicative and referred to the basic crane without options or, accessories, protection carters and ancillary equipments (grab, clamp, glass handling device)

Options:

- Proportional electro-hydraulic flow control with SCANRECO radio control
- Lateral top seat control with joystick and pedals
- Man standing platform with crane operative restricted area
- Ground hoisting control
- Glass container handling device
- Oil cooling system
- Top seat access ladder
- Working lights (top seat and jib light)
- Hour counter
- Dry seat foldable shelter



Updating 12/2011

The technical details shown in this sheet are indicative and can be changed by the builder without prior notice.

B.O.B. Sistemi Idraulici S.p.A. – Regione Oltre Rea, 61 – 12060 Monchiero (CN) - Italia
P. I.V.A. 00496180043 - Tel.: +39 (0173) 780002/3 – Fax: +39 (0173) 780004
Internet: www.bobspa.com - E-mail: info@bobitalev.com



b.o.b. Sistemi Idraulici S.p.A.

COMPANY WITH QUALITY MANAGEMENT
SYSTEM CERTIFIED BY DNV
= ISO 9001:2008 =

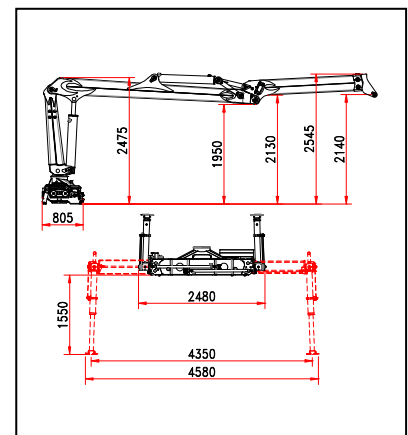
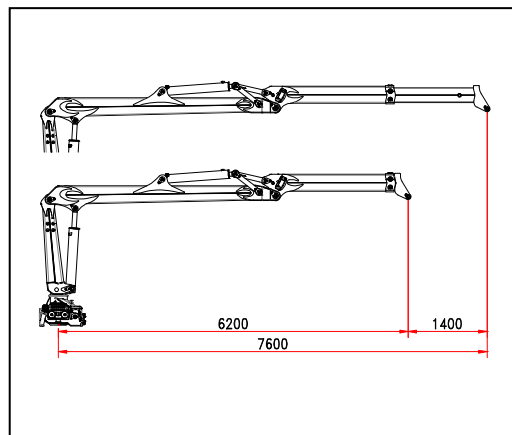
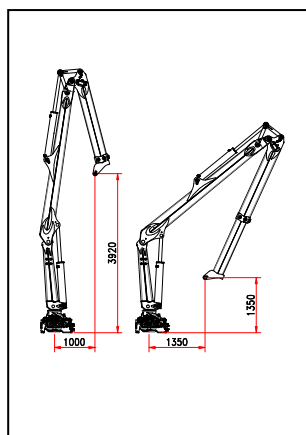
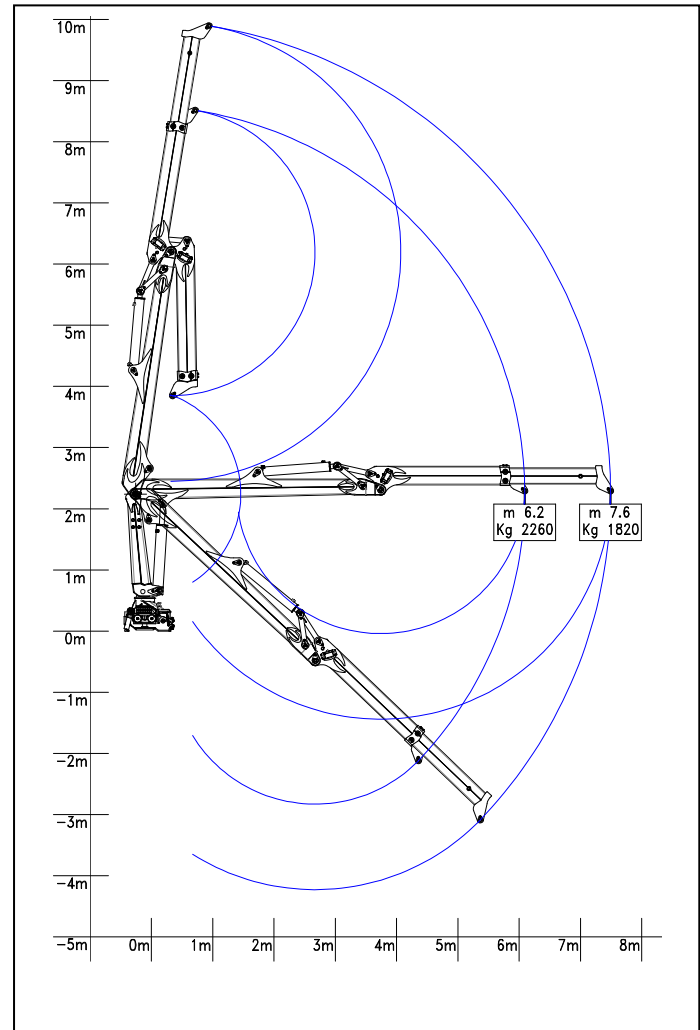
CRANE « R 150 MS1 »

NON FOLDABLE

- Class of calculation H1B4
 - Lifting moment = kNm 150
 - Hydraulic outreach = 7,60 m
 - First arm rigid type
 - Jib with one hydraulic extension with integrated fluid transmission system inside jib
 - Compensated proportional flow control
 - Top seat control with two additional functions at the jib extension
 - Stabilizers ground bilateral controls with hydraulic extension and 180° rotation
 - Crane rotation 425° with double rack
 - Construction to Machinery Directives 2006/42/CE+UNI EN 12.999
 - Basic crane weight*: 2.770 kg
- * The weight is indicative and referred to the basic crane without options or, accessories, protection carters and ancillary equipments (grab, clamp, glass handling device)

Options:

- Proportional electro-hydraulic flow control with SCANRECO radio control
- Lateral top seat control with joystick and pedals
- Man standing platform with crane operative restricted area
- Ground hoisting control
- Glass container handling device
- Oil cooling system
- Top seat access ladder
- Working lights (top seat and jib light)
- Hour counter
- Dry seat foldable shelter



Updating 12/2011

The technical details shown in this sheet are indicative and can be changed by the builder without prior notice.

B.O.B. Sistemi Idraulici S.p.A. – Regione Oltre Rea, 61 – 12060 Monchiero (CN) - Italia
P. I.V.A. 00496180043 - Tel.: +39 (0173) 780002/3 – Fax: +39 (0173) 780004
Internet: www.bobspa.com - E-mail: info@bobitalev.com



b.o.b. Sistemi Idraulici S.p.A.

COMPANY WITH QUALITY MANAGEMENT
SYSTEM CERTIFIED BY DNV
= ISO 9001:2008 =

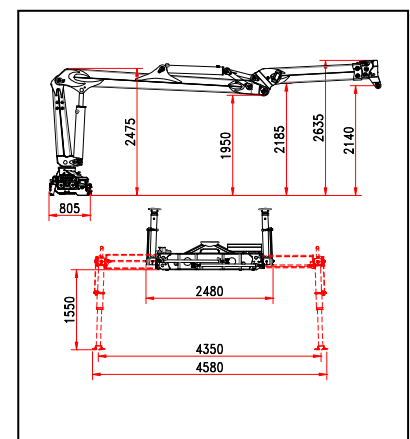
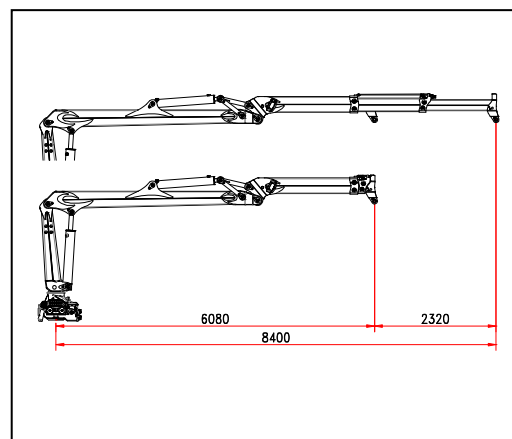
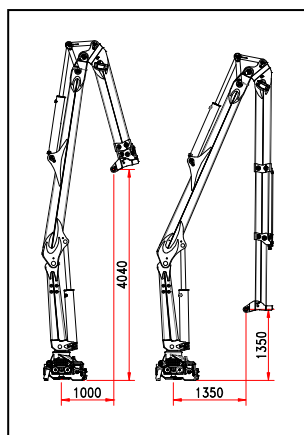
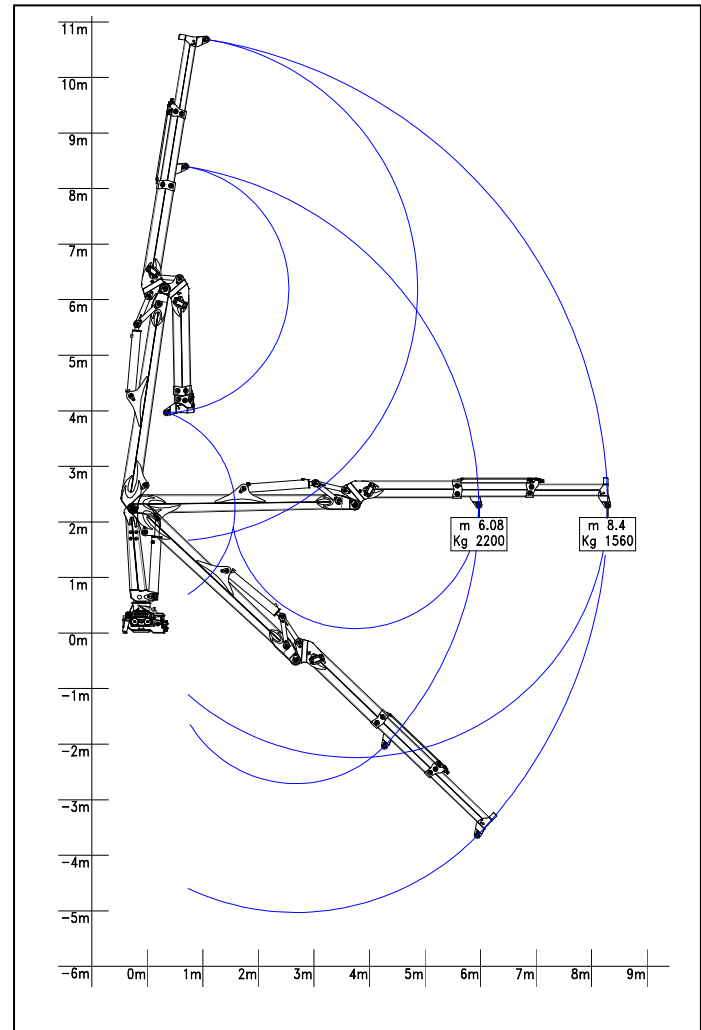
CRANE « R 150 MS2 »

NON FOLDABLE

- Class of calculation H1B4
 - Lifting moment = kNm 150
 - Hydraulic outreach = 8,40 m
 - First arm rigid type
 - Jib with two hydraulic extensions with integrated fluid transmission system inside jib
 - Compensated proportional flow control
 - Top seat control with two additional functions at the jib extension
 - Stabilizers ground bilateral controls with hydraulic extension and 180° rotation
 - Crane rotation 425° with double rack
 - Construction to Machinery Directives 2006/42/CE+UNI EN 12.999
 - Basic crane weight*: 2.880 kg
- * The weight is indicative and referred to the basic crane without options or, accessories, protection carters and ancillary equipments (grab, clamp, glass handling device)

Options:

- Proportional electro-hydraulic flow control with SCANRECO radio control
- Lateral top seat control with joystick and pedals
- Man standing platform with crane operative restricted area
- Ground hoisting control
- Glass container handling device
- Oil cooling system
- Top seat access ladder
- Working lights (top seat and jib light)
- Hour counter
- Dry seat foldable shelter



Updating 12/2011

The technical details shown in this sheet are indicative and can be changed by the builder without prior notice.

B.O.B. Sistemi Idraulici S.p.A. – Regione Oltre Rea, 61 – 12060 Monchiero (CN) - Italia
P. I.V.A. 00496180043 - Tel.: +39 (0173) 780002/3 – Fax: +39 (0173) 780004
Internet: www.bobspa.com - E-mail: info@bobitalev.com



b.o.b. Sistemi Idraulici S.p.A.

COMPANY WITH QUALITY MANAGEMENT
SYSTEM CERTIFIED BY DNV
= ISO 9001:2008 =

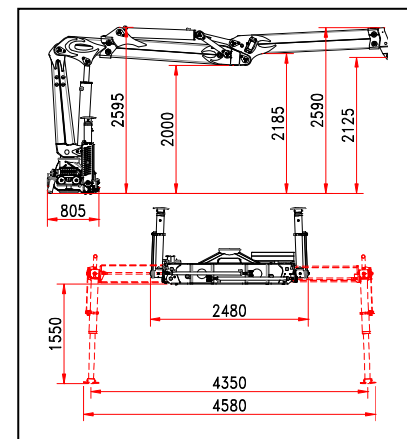
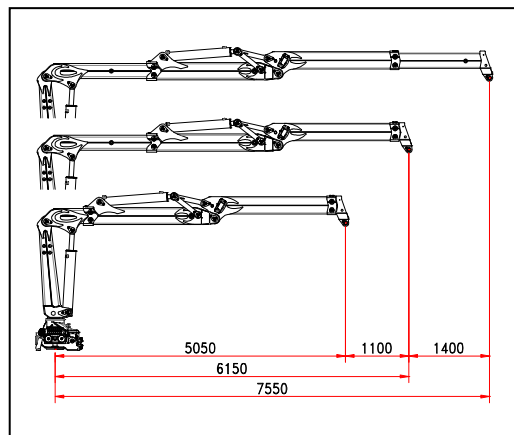
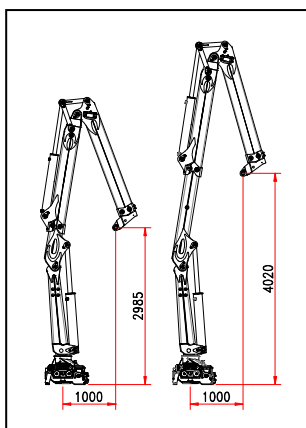
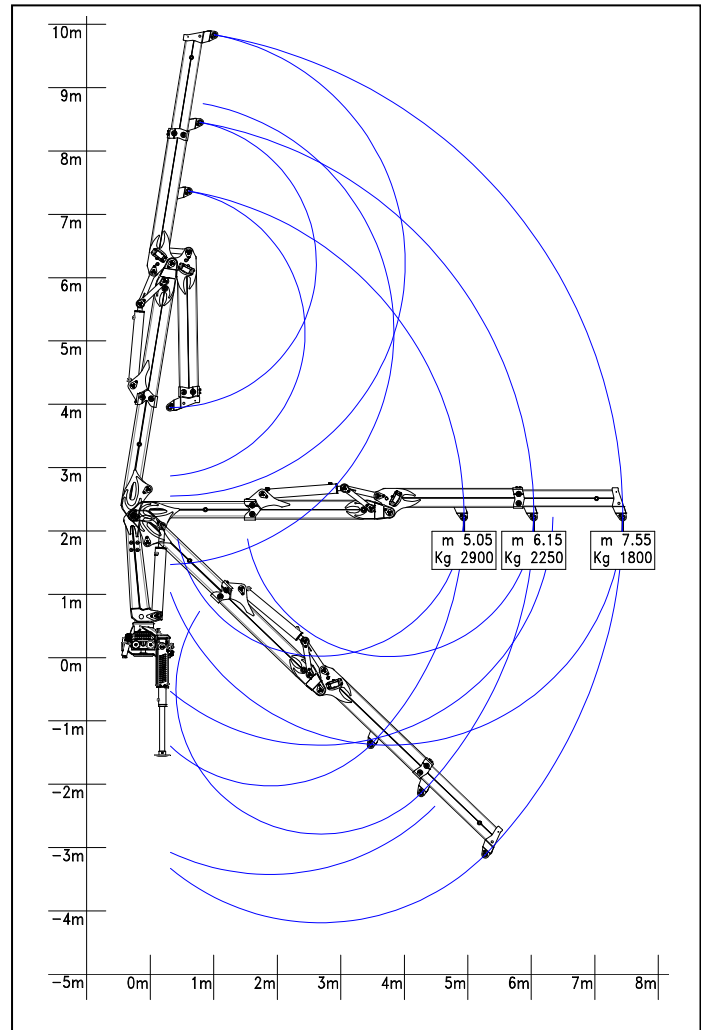
CRANE « R 150 S2S »

NON FOLDABLE

- Class of calculation H1B4
 - Lifting moment = kNm 150
 - Hydraulic outreach = 7,55 m
 - First arm with short hydraulic extension
 - Jib with one hydraulic extension with integrated fluid transmission system inside jib
 - Compensated proportional flow control
 - Top seat control with two additional functions at the jib extension
 - Stabilizers ground bilateral controls with extension and 180° hydraulic rotation
 - Crane rotation 425° with double rack
 - Construction to Machinery Directives 2006/42/CE+UNI EN 12.999
 - Basic crane weight*: 2.930 kg
- * The weight is indicative and referred to the basic crane without options or, accessories, protection carters and ancillary equipments (grab, clamp, glass handling device)

Options:

- Proportional electro-hydraulic flow control with SCANRECO radio control
- Lateral top seat control with joystick and pedals
- Man standing platform with crane operative restricted area
- Ground hoisting control
- Glass container handling device
- Oil cooling system
- Top seat access ladder
- Working lights (top seat and jib light)
- Hour counter
- Dry seat foldable shelter



Updating 12/2011

The technical details shown in this sheet are indicative and can be changed by the builder without prior notice.

B.O.B. Sistemi Idraulici S.p.A. – Regione Oltre Rea, 61 – 12060 Monchiero (CN) - Italia
P. I.V.A. 00496180043 - Tel.: +39 (0173) 780002/3 – Fax: +39 (0173) 780004
Internet: www.bobspa.com - E-mail: info@bobitalev.com



b.o.b. Sistemi Idraulici S.p.A.

COMPANY WITH QUALITY MANAGEMENT
SYSTEM CERTIFIED BY DNV
= ISO 9001:2008 =

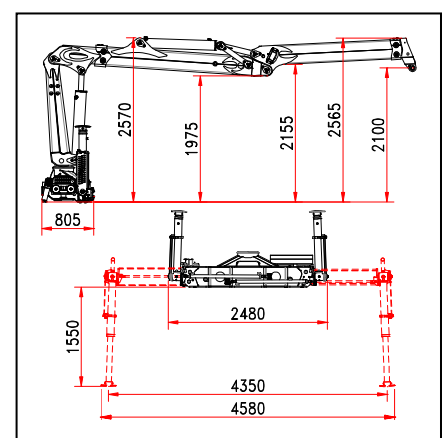
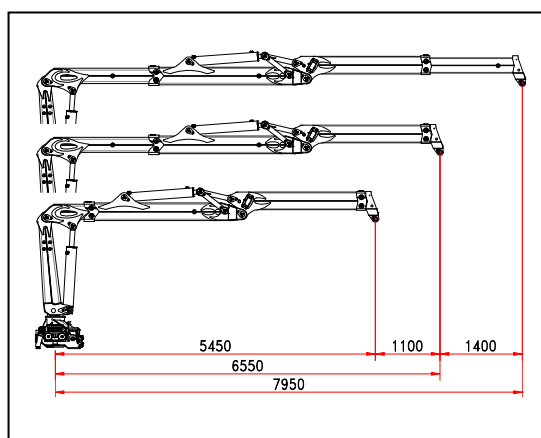
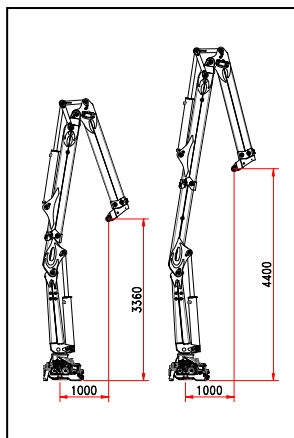
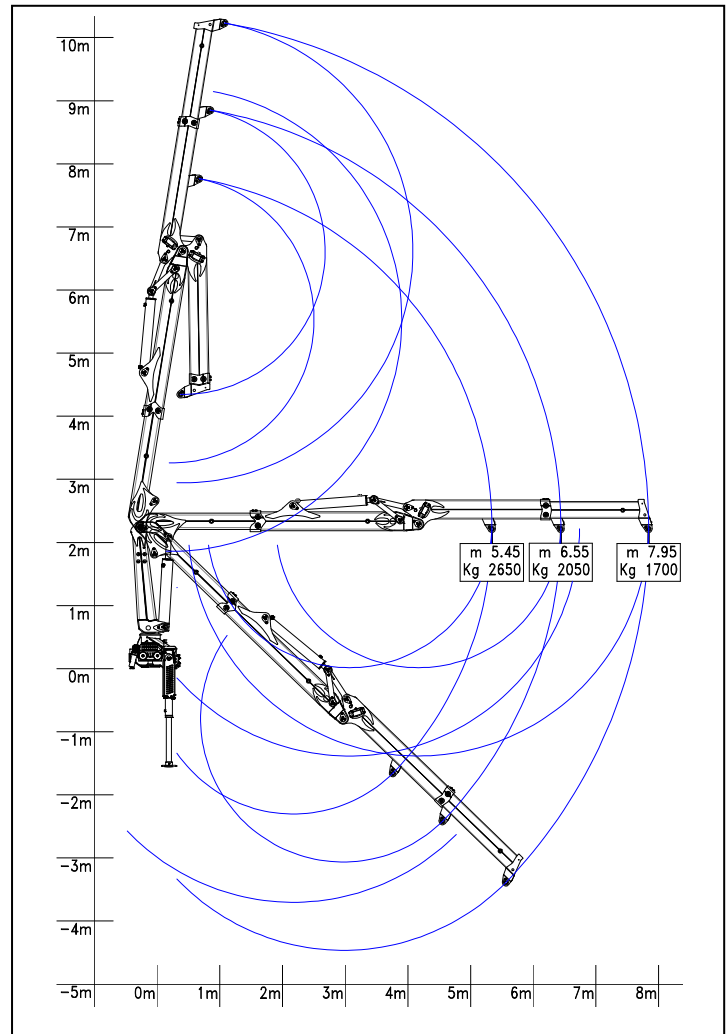
CRANE « R 150 S2L »

NON FOLDABLE

- Class of calculation H1B4
 - Lifting moment = kNm 150
 - Hydraulic outreach = 7,95 m
 - First arm with standard hydraulic extension
 - Jib with one hydraulic extension with integrated fluid transmission system inside jib
 - Compensated proportional flow control
 - Top seat control with two additional functions at the jib extension
 - Stabilizers ground bilateral controls with extension and 180° hydraulic rotation
 - Crane rotation 425° with double rack
 - Construction to Machinery Directives 2006/42/CE+UNI EN 12.999
 - Basic crane weight*: 2.960 kg
- * The weight is indicative and referred to the basic crane without options or, accessories, protection carters and ancillary equipments (grab, clamp, glass handling device)

Options:

- Proportional electro-hydraulic flow control with SCANRECO radio control
- Lateral top seat control with joystick and pedals
- Man standing platform with crane operative restricted area
- Ground hoisting control
- Glass container handling device
- Oil cooling system
- Top seat access ladder
- Working lights (top seat and jib light)
- Hour counter
- Dry seat foldable shelter



Updating 12/2011

The technical details shown in this sheet are indicative and can be changed by the builder without prior notice.

B.O.B. Sistemi Idraulici S.p.A. – Regione Oltre Rea, 61 – 12060 Monchiero (CN) - Italia
P. I.V.A. 00496180043 - Tel.: +39 (0173) 780002/3 – Fax: +39 (0173) 780004
Internet: www.bobspa.com - E-mail: info@bobitalev.com



b.o.b. Sistemi Idraulici S.p.A.

COMPANY WITH QUALITY MANAGEMENT
SYSTEM CERTIFIED BY DNV
= ISO 9001:2008 =

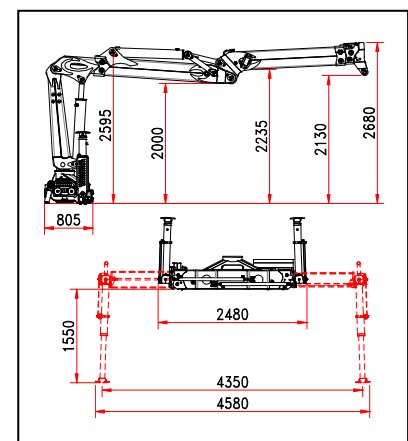
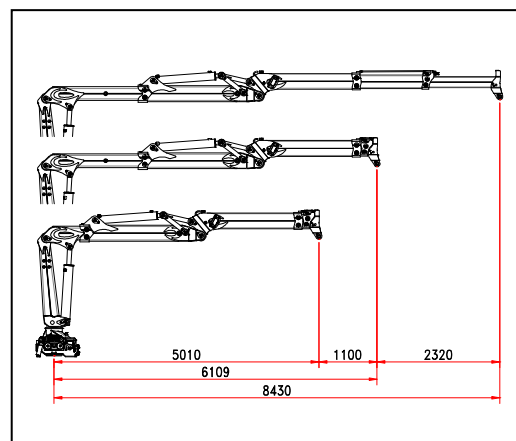
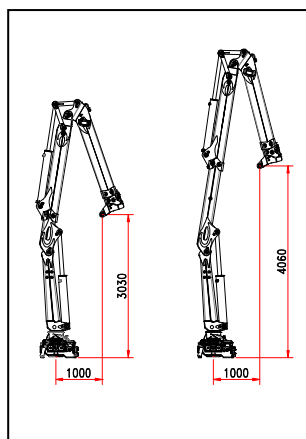
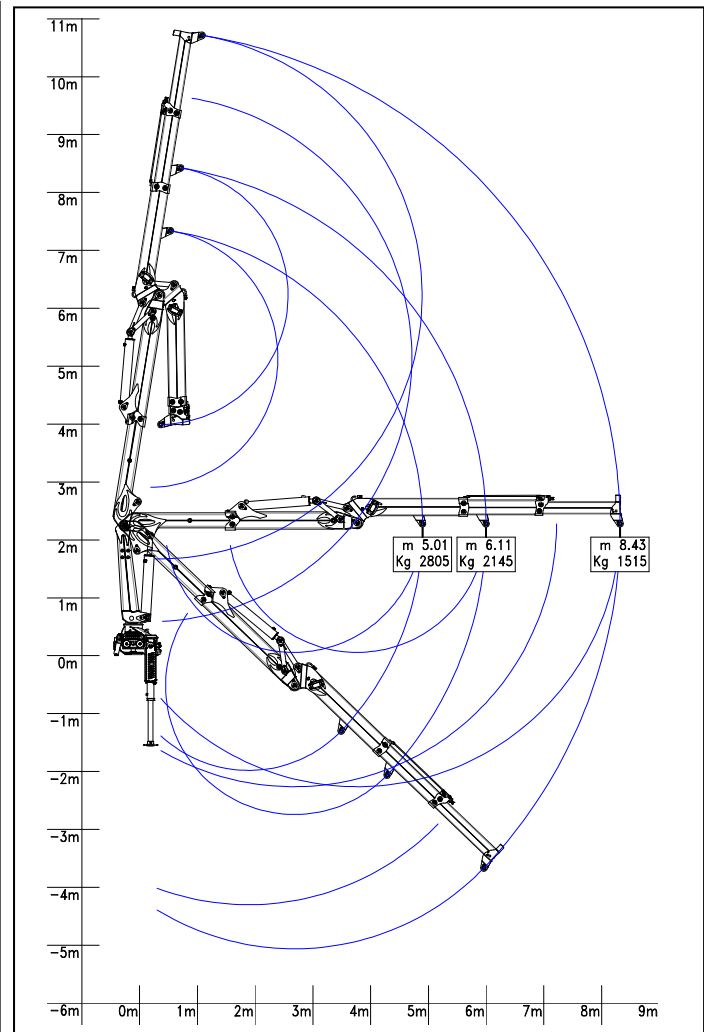
CRANE « R 150 S3S »

NON FOLDABLE

- Class of calculation H1B4
- Lifting moment = kNm 150
- Hydraulic outreach = 8,43 m
- First arm with short hydraulic extension
- Jib with two hydraulic extensions with integrated fluid transmission system inside jib
- Compensated proportional flow control
- Top seat control with two additional functions at the jib extension
- Stabilizers ground bilateral controls with extension and 180° hydraulic rotation
- Crane rotation 425° with double rack
- Construction to Machinery Directives 2006/42/CE+UNI EN 12.999
- Basic crane weight*: 3.045 kg
* The weight is indicative and referred to the basic crane without options or, accessories, protection carters and ancillary equipments (grab, clamp, glass handling device)

Options:

- Proportional electro-hydraulic flow control with SCANRECO radio control
- Lateral top seat control with joystick and pedals
- Man standing platform with crane operative restricted area
- Ground hoisting control
- Glass container handling device
- Oil cooling system
- Top seat access ladder
- Working lights (top seat and jib light)
- Hour counter
- Dry seat foldable shelter



Updating 12/2011

The technical details shown in this sheet are indicative and can be changed by the builder without prior notice.



b.o.b. Sistemi Idraulici S.p.A.

COMPANY WITH QUALITY MANAGEMENT
SYSTEM CERTIFIED BY DNV
= ISO 9001:2008 =

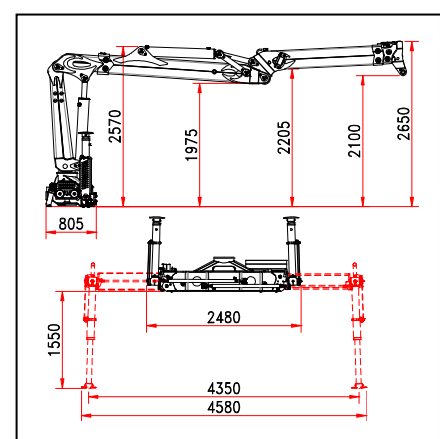
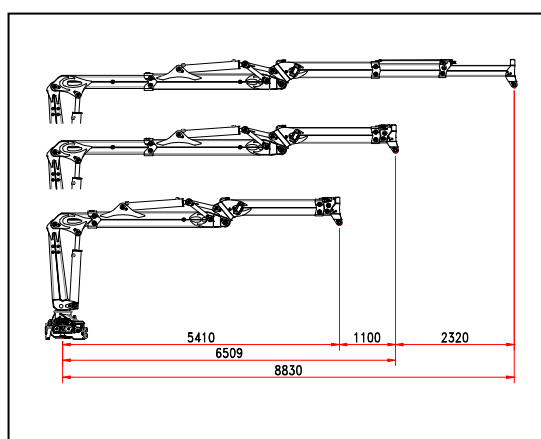
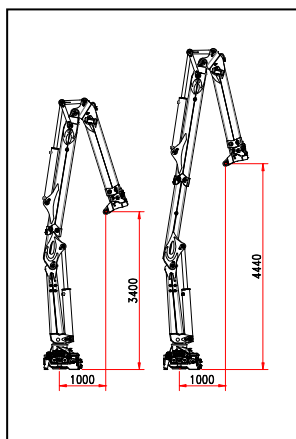
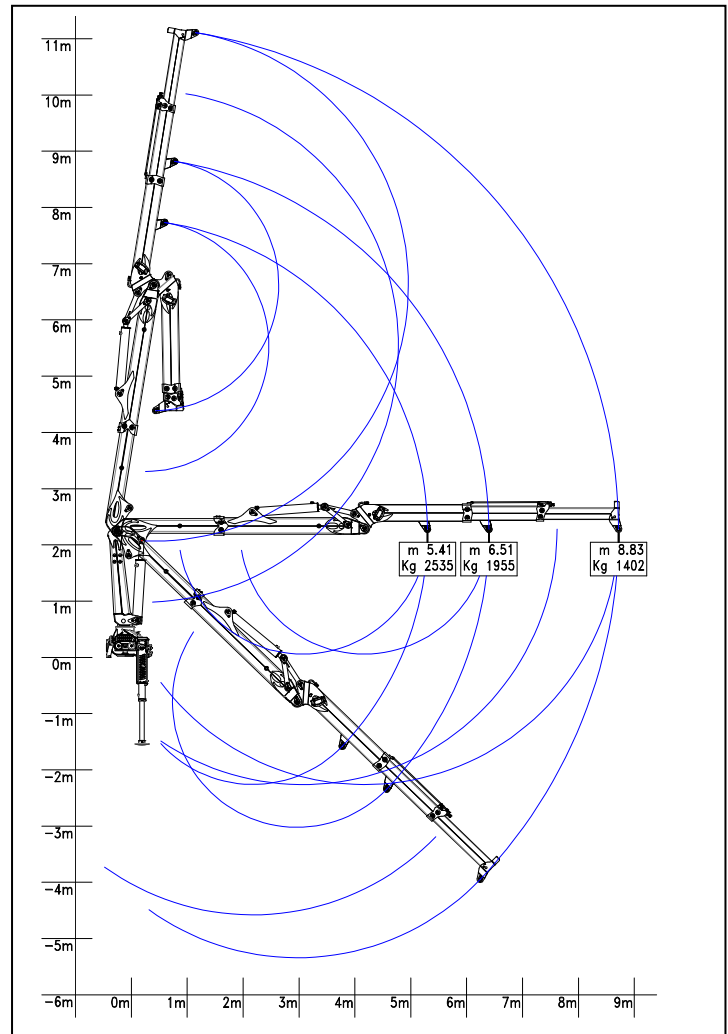
CRANE « R 150 S3L »

NON FOLDABLE

- Class of calculation H1B4
 - Lifting moment = kNm 150
 - Hydraulic outreach = 8,83 m
 - First arm with standard hydraulic extension
 - Jib with two hydraulic extension with integrated fluid transmission system inside jib
 - Compensated proportional flow control
 - Top seat control with two additional functions at the jib extension
 - Stabilizers ground bilateral controls with extension and 180° hydraulic rotation
 - Crane rotation 425° with double rack
 - Construction to Machinery Directives 2006/42/CE+UNI EN 12.999
 - Basic crane weight*: 3.075 kg
- * The weight is indicative and referred to the basic crane without options or, accessories, protection carters and ancillary equipments (grab, clamp, glass handling device)

Options:

- Proportional electro-hydraulic flow control with SCANRECO radio control
- Lateral top seat control with joystick and pedals
- Man standing platform with crane operative restricted area
- Ground hoisting control
- Glass container handling device
- Oil cooling system
- Top seat access ladder
- Working lights (top seat and jib light)
- Hour counter
- Dry seat foldable shelter



Updating 12/2011

The technical details shown in this sheet are indicative and can be changed by the builder without prior notice.

B.O.B. Sistemi Idraulici S.p.A. – Regione Oltre Rea, 61 – 12060 Monchiero (CN) - Italia
P. I.V.A. 00496180043 - Tel.: +39 (0173) 780002/3 – Fax: +39 (0173) 780004
Internet: www.bobspa.com - E-mail: info@bobitalev.com



b.o.b. Sistemi Idraulici S.p.A.

COMPANY WITH QUALITY MANAGEMENT
SYSTEM CERTIFIED BY DNV
= ISO 9001:2008 =

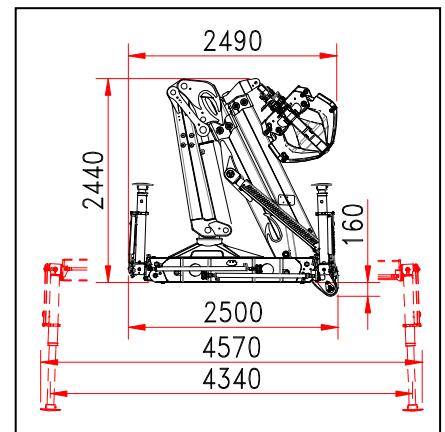
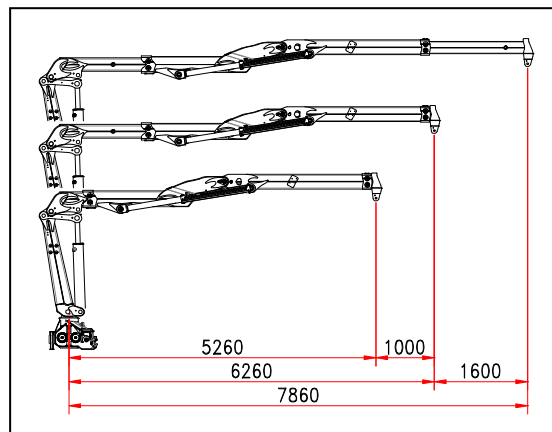
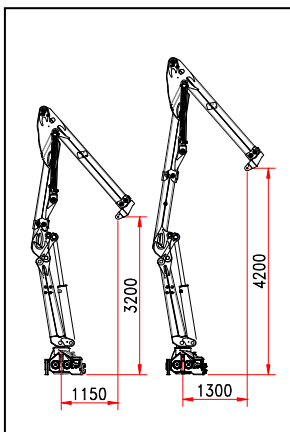
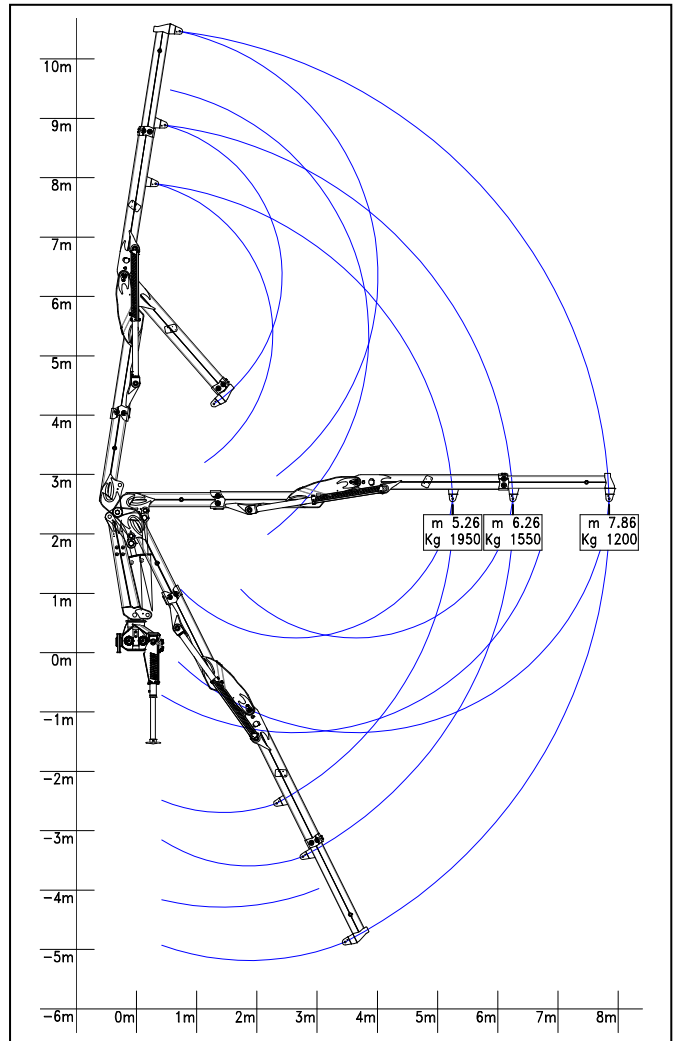
CRANE « W 110 S2 »

FOLDABLE

- Class of calculation H1B4
 - Lifting moment = kNm 110
 - Hydraulic outreach = 7,86 m
 - First arm with hydraulic extension
 - Jib with one hydraulic extension with integrated fluid transmission system inside jib
 - Compensated proportional flow control
 - Top seat control with two additional functions at the jib extension
 - Stabilizers ground bilateral controls with hydraulic extension and descent
 - Crane rotation 425° with double rack
 - Construction to Machinery Directives 2006/42/CE+UNI EN 12.999
 - Basic crane weight*: 2.580 kg
- * The weight is indicative and referred to the basic crane without options or, accessories, protection carters and ancillary equipments (grab, clamp, glass handling device)

Options:

- Stabilizing feet with hydraulic rotation 180°
- Proportional electro-hydraulic flow control with SCANRECO radio control
- Lateral top seat control with joystick and pedals
- Man standing platform with crane operative restricted area
- Ground hoisting control
- Glass container handling device
- Oil cooling system
- Top seat access ladder
- Working lights (top seat and jib light)
- Hour counter
- Dry seat foldable shelter



Updating 12/2011

The technical details shown in this sheet are indicative and can be changed by the builder without prior notice.

B.O.B. Sistemi Idraulici S.p.A. – Regione Oltre Rea, 61 – 12060 Monchiero (CN) - Italia
P. I.V.A. 00496180043 - Tel.: +39 (0173) 780002/3 – Fax: +39 (0173) 780004
Internet: www.bobspa.com - E-mail: info@bobitalev.com



b.o.b. Sistemi Idraulici S.p.A.

COMPANY WITH QUALITY MANAGEMENT
SYSTEM CERTIFIED BY DNV
= ISO 9001:2008 =

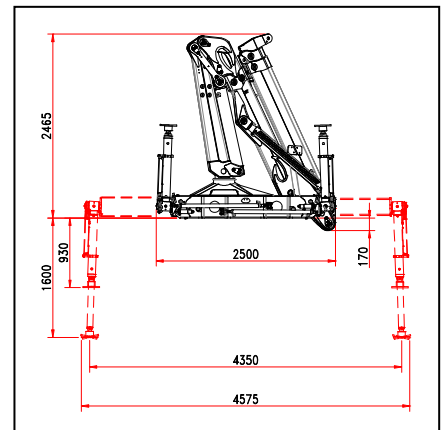
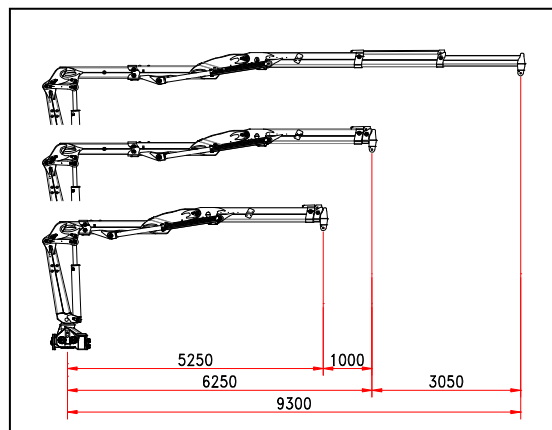
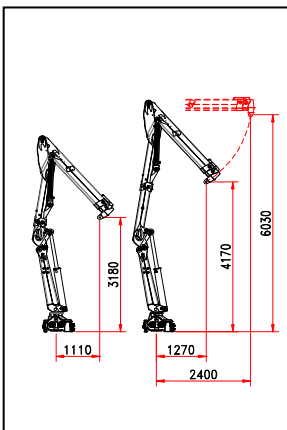
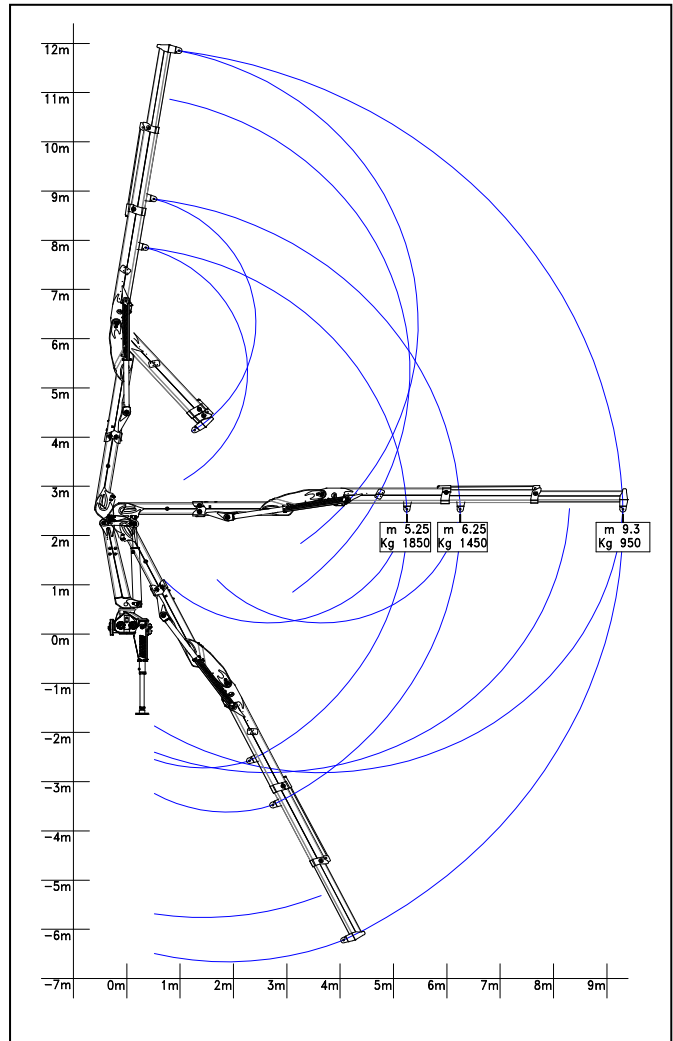
CRANE « W 110 S3 »

FOLDABLE

- Class of calculation H1B4
 - Lifting moment = kNm 110
 - Hydraulic outreach = 9,30 m
 - First arm with hydraulic extension
 - Jib with two hydraulic extensions with integrated fluid transmission system inside jib
 - Compensated proportional flow control
 - Top seat control with two additional functions at the jib extension
 - Stabilizers ground bilateral controls with hydraulic extension and descent
 - Crane rotation 425° with double rack
 - Construction to Machinery Directives 2006/42/CE+UNI EN 12.999
 - Basic crane weight*: 2.670 kg
- * The weight is indicative and referred to the basic crane without options or accessories, protection carters and ancillary equipments (grab, clamp, glass handling device)

Options:

- Stabilizing feet with hydraulic rotation 180°
- Proportional electro-hydraulic flow control with SCANRECO radio control
- Lateral top seat control with joystick and pedals
- Man standing platform with crane operative restricted area
- Ground hoisting control
- Glass container handling device
- Oil cooling system
- Top seat access ladder
- Working lights (top seat and jib light)
- Hour counter
- Dry seat foldable shelter



Updating 12/2011

The technical details shown in this sheet are indicative and can be changed by the builder without prior notice.



b.o.b. Sistemi Idraulici S.p.A.

COMPANY WITH QUALITY MANAGEMENT
SYSTEM CERTIFIED BY DNV
= ISO 9001:2008 =

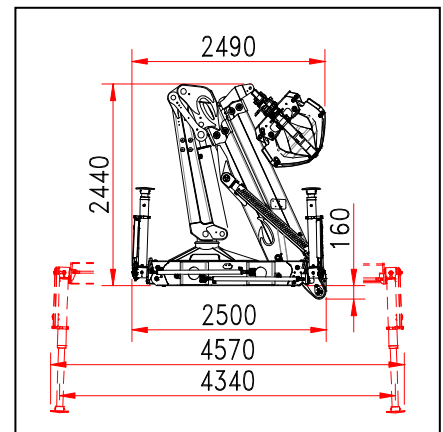
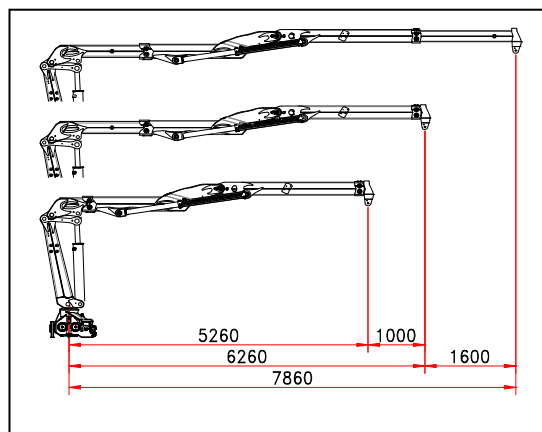
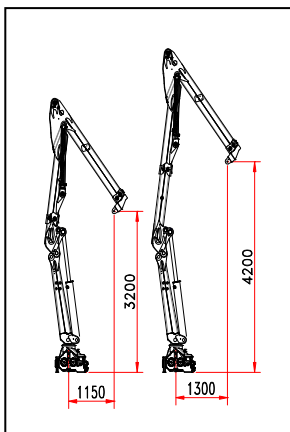
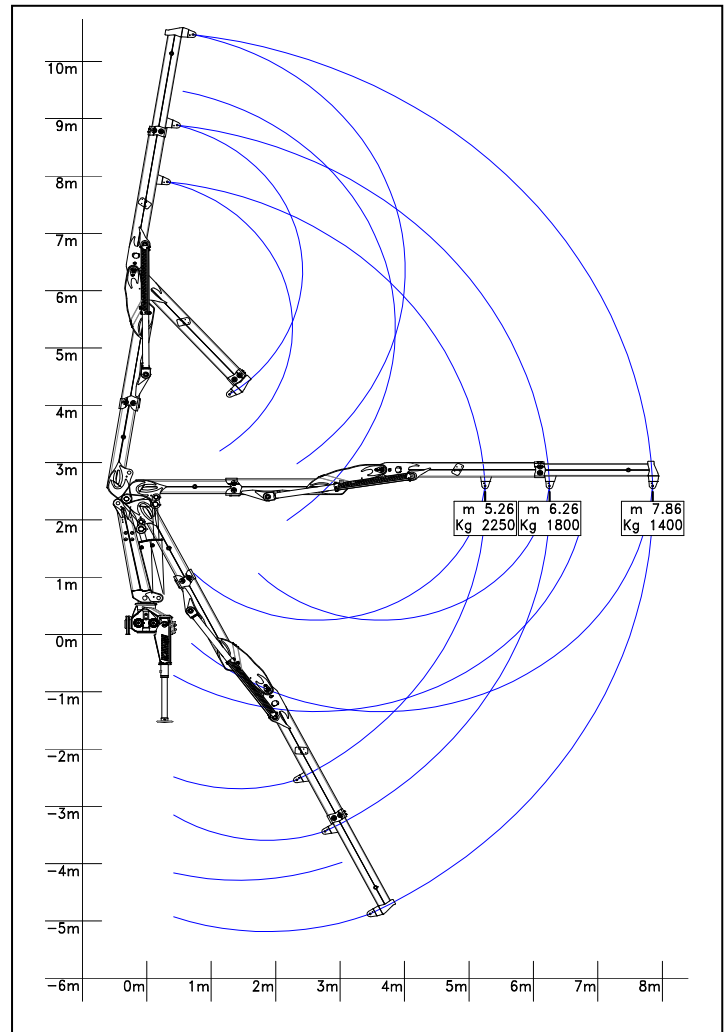
CRANE « W 130 S2 »

FOLDABLE

- Class of calculation H1B4
 - Lifting moment = kNm 130
 - Hydraulic outreach = 7,86 m
 - First arm with hydraulic extension
 - Jib with one hydraulic extension with integrated fluid transmission system inside jib
 - Compensated proportional flow control
 - Top seat control with two additional functions at the jib extension
 - Stabilizers ground bilateral controls with extension and 180° hydraulic rotation
 - Crane rotation 425° with double rack
 - Construction to Machinery Directives 2006/42/CE+UNI EN 12.999
 - Basic crane weight*: 2.630 kg
- * The weight is indicative and referred to the basic crane without options or, accessories, protection carters and ancillary equipments (grab, clamp, glass handling device)

Options:

- Proportional electro-hydraulic flow control with SCANRECO radio control
- Lateral top seat control with joystick and pedals
- Man standing platform with crane operative restricted area
- Ground hoisting control
- Glass container handling device
- Oil cooling system
- Top seat access ladder
- Working lights (top seat and jib light)
- Hour counter
- Dry seat foldable shelter



Updating 12/2011

The technical details shown in this sheet are indicative and can be changed by the builder without prior notice.

B.O.B. Sistemi Idraulici S.p.A. – Regione Oltre Rea, 61 – 12060 Monchiero (CN) - Italia
P. I.V.A. 00496180043 - Tel.: +39 (0173) 780002/3 – Fax: +39 (0173) 780004
Internet: www.bobspa.com - E-mail: info@bobitalev.com



b.o.b. Sistemi Idraulici S.p.A.

COMPANY WITH QUALITY MANAGEMENT
SYSTEM CERTIFIED BY DNV
= ISO 9001:2008 =

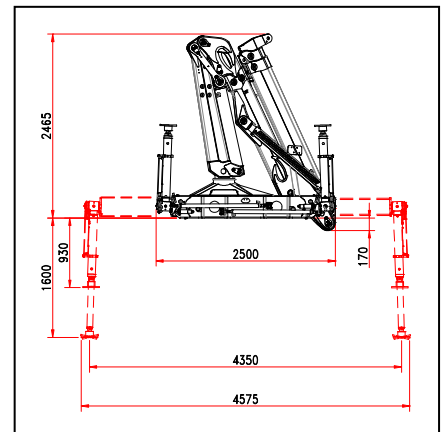
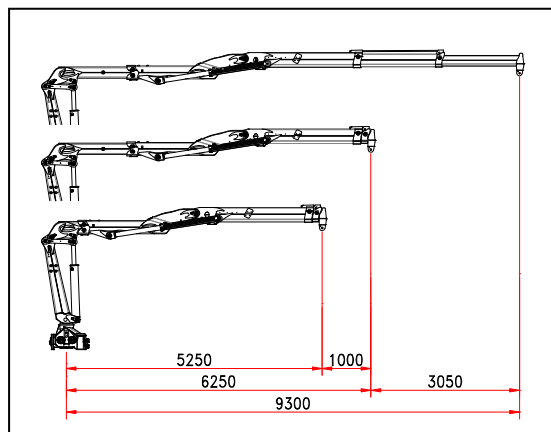
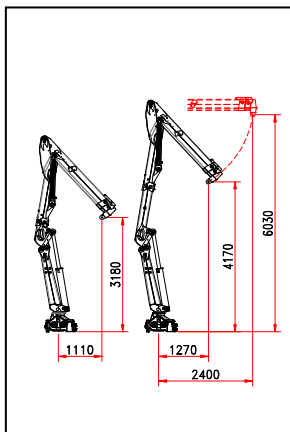
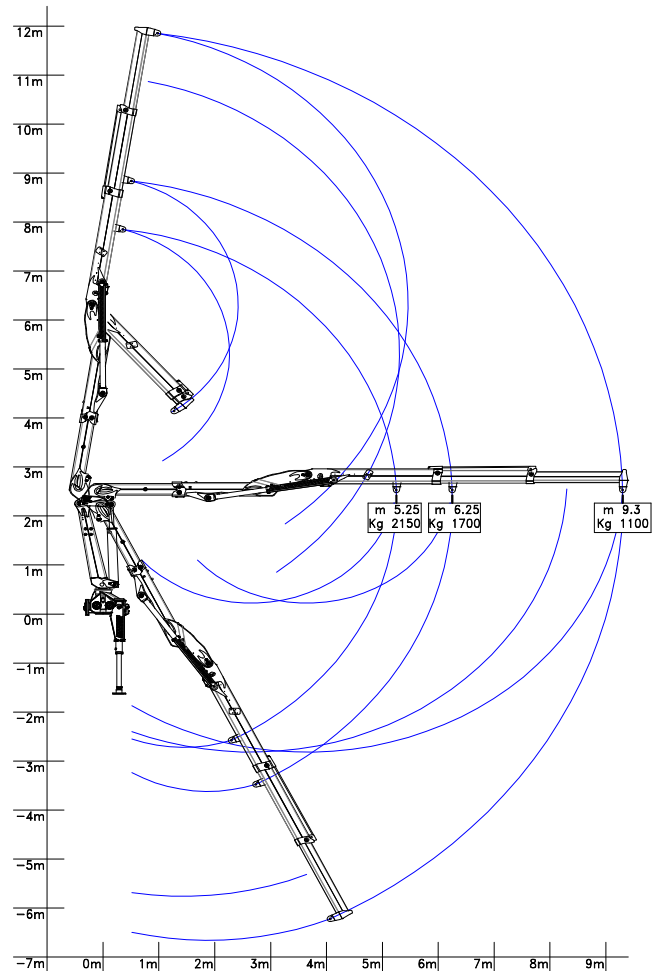
CRANE « W 130 S3 »

FOLDABLE

- Class of calculation H1B4
 - Lifting moment = kNm 130
 - Hydraulic outreach = 9,30 m
 - First arm with hydraulic extension
 - Jib with two hydraulic extensions with integrated fluid transmission system inside jib
 - Compensated proportional flow control
 - Top seat control with two additional functions at the jib extension
 - Stabilizers ground bilateral controls with extension and 180° hydraulic rotation
 - Crane rotation 425° with double rack
 - Construction to Machinery Directives 2006/42/CE+UNI EN 12.999
 - Basic crane weight*: 2.720 kg
- * The weight is indicative and referred to the basic crane without options or accessories, protection carters and ancillary equipments (grab, clamp, glass handling device)

Options:

- Proportional electro-hydraulic flow control with SCANRECO radio control
- Lateral top seat control with joystick and pedals
- Man standing platform with crane operative restricted area
- Ground hoisting control
- Glass container handling device
- Oil cooling system
- Top seat access ladder
- Working lights (top seat and jib light)
- Hour counter
- Dry seat foldable shelter



Updating 12/2011

The technical details shown in this sheet are indicative and can be changed by the builder without prior notice.

B.O.B. Sistemi Idraulici S.p.A. – Regione Oltre Rea, 61 – 12060 Monchiero (CN) - Italia
P. I.V.A. 00496180043 - Tel.: +39 (0173) 780002/3 – Fax: +39 (0173) 780004
Internet: www.bobspa.com - E-mail: info@bobitalev.com



b.o.b. Sistemi Idraulici S.p.A.

COMPANY WITH QUALITY MANAGEMENT
SYSTEM CERTIFIED BY DNV
= ISO 9001:2008 =

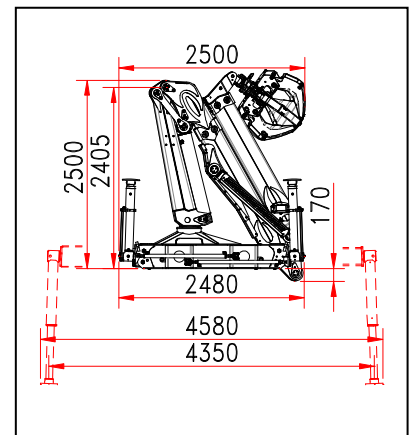
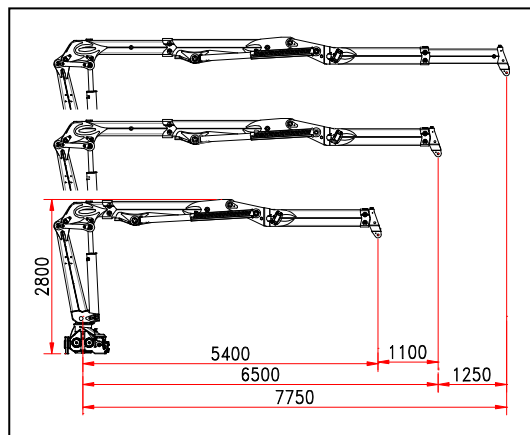
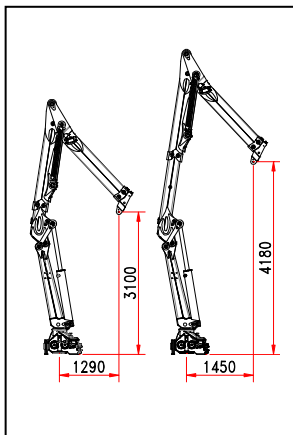
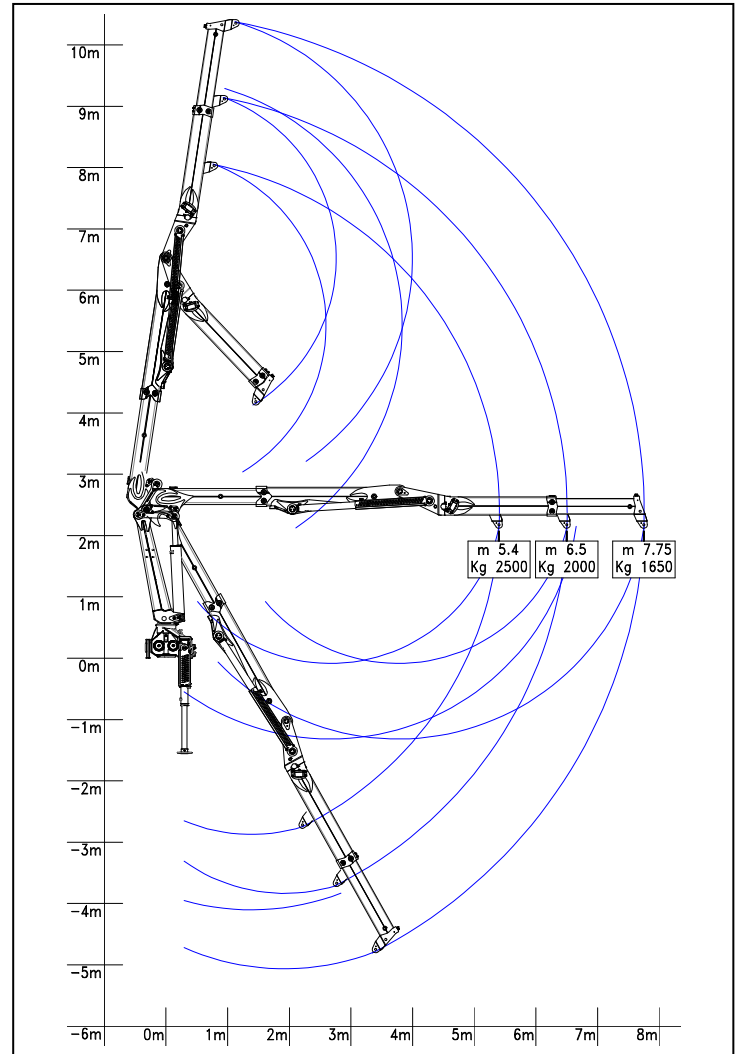
CRANE « W 150 S2 »

FOLDABLE

- Class of calculation H1B4
 - Lifting moment = kNm 150
 - Hydraulic outreach = 7,75 m
 - First arm with hydraulic extension
 - Jib with one hydraulic extension with integrated fluid transmission system inside jib
 - Compensated proportional flow control
 - Top seat control with two additional functions at the jib extension
 - Stabilizers ground bilateral controls with extension and 180° hydraulic rotation
 - Crane rotation 425° with double rack
 - Construction to Machinery Directives 2006/42/CE+UNI EN 12.999
 - Basic crane weight*: 3.130 kg
- * The weight is indicative and referred to the basic crane without options or accessories, protection carters and ancillary equipments (grab, clamp, glass handling device)

Options:

- Proportional electro-hydraulic flow control with SCANRECO radio control
- Lateral top seat control with joystick and pedals
- Man standing platform with crane operative restricted area
- Ground hoisting control
- Glass container handling device
- Oil cooling system
- Top seat access ladder
- Working lights (top seat and jib light)
- Hour counter
- Dry seat foldable shelter



Updating 12/2011

The technical details shown in this sheet are indicative and can be changed by the builder without prior notice.

B.O.B. Sistemi Idraulici S.p.A. – Regione Oltre Rea, 61 – 12060 Monchiero (CN) - Italia
P. I.V.A. 00496180043 - Tel.: +39 (0173) 780002/3 – Fax: +39 (0173) 780004
Internet: www.bobspa.com - E-mail: info@bobitalev.com



b.o.b. Sistemi Idraulici S.p.A.

COMPANY WITH QUALITY MANAGEMENT
SYSTEM CERTIFIED BY DNV
= ISO 9001:2008 =

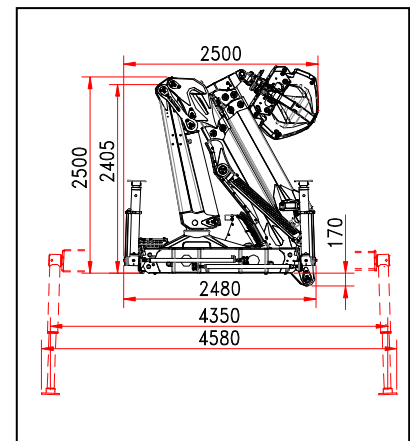
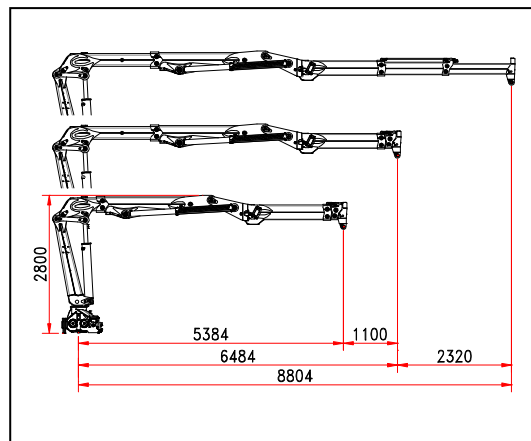
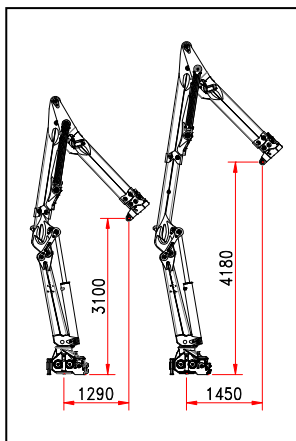
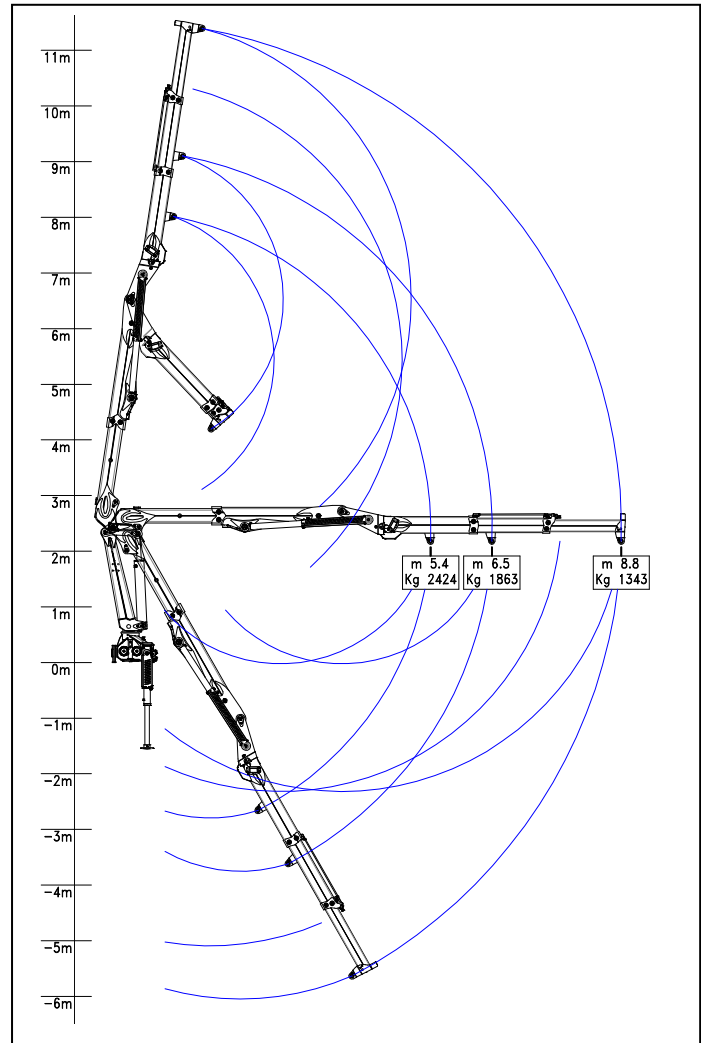
CRANE « W 150 S3 »

FOLDABLE

- Class of calculation H1B4
 - Lifting moment = kNm 150
 - Hydraulic outreach = 8,80 m
 - First arm with hydraulic extension
 - Jib with two hydraulic extensions with integrated fluid transmission system inside jib
 - Compensated proportional flow control
 - Top seat control with two additional functions at the jib extension
 - Stabilizers ground bilateral controls with extension and 180° hydraulic rotation
 - Crane rotation 425° with double rack
 - Construction to Machinery Directives 2006/42/CE+UNI EN 12.999
 - Basic crane weight*: 3.240 kg
- * The weight is indicative and referred to the basic crane without options or accessories, protection carters and ancillary equipments (grab, clamp, glass handling device)

Options:

- Proportional electro-hydraulic flow control with SCANRECO radio control
- Lateral top seat control with joystick and pedals
- Man standing platform with crane operative restricted area
- Ground hoisting control
- Glass container handling device
- Oil cooling system
- Top seat access ladder
- Working lights (top seat and jib light)
- Hour counter
- Dry seat foldable shelter



Updating 12/2011

The technical details shown in this sheet are indicative and can be changed by the builder without prior notice.

B.O.B. Sistemi Idraulici S.p.A. – Regione Oltre Rea, 61 – 12060 Monchiero (CN) - Italia
P. I.V.A. 00496180043 - Tel.: +39 (0173) 780002/3 – Fax: +39 (0173) 780004
Internet: www.bobspa.com - E-mail: info@bobitalev.com

